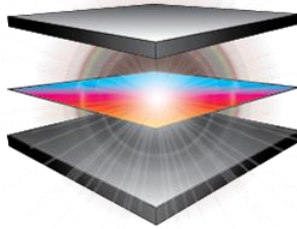


SanDisk®

SanDisk ReadyCache™ SSD



ExpressCache™ from ConduSiv™ Technologies Corporation

User's Manual

Version 1.1

Technical Support

[SanDisk Knowledgebase](#)

[Contact SanDisk](#)

Table of Contents

Overview.....	3
Minimum System Requirements	3
Package Contents.....	3
Installing a SanDisk ReadyCache SSD on a desktop computer.....	3
Installing ExpressCache software	4
Activating ExpressCache.....	9
Enable Caching.....	11
Disable Caching.....	12
Clear the Cache.....	12
Cache Status.....	13
Help	13
Check for Application Update.....	13
Choose Your Language.....	14
Cache Monitor	15
Turn off write-cache buffer flushing	16
About.....	16
System Tray Icon	17
Frequently Asked Questions.....	17

Overview

SanDisk ReadyCache SSD accelerates your existing PC's boot time and improves overall application load and response times. It resides alongside your desktop computer's existing hard drive and is designed for systems running the Windows® 7 operating system. When paired with ExpressCache™ software by Conduvix Technologies, the solution's advanced caching algorithms automatically manage data by caching commonly used files to improve overall storage performance.

Minimum System Requirements

- Windows® 7/8
- 1GB of RAM (32bit) and 2GB of RAM (64bit)
- SATA II or higher port
- Broadband Internet Connection (to authenticate the activation code)
- .Net Framework 3.5 or higher
- Internet Explorer 8 or higher

Package Contents

- SanDisk ReadyCache SSD
- A SATA data cable
- 2.5" to 3.5" adaptor bracket
- ExpressCache software activation code

Installing a SanDisk ReadyCache SSD on a desktop computer

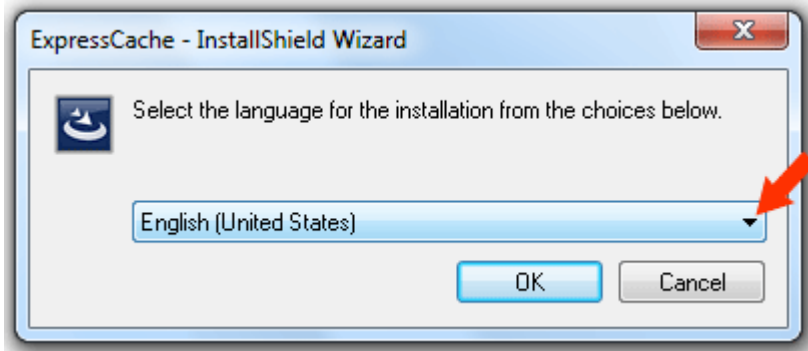
NOTE: The SanDisk ReadyCache SSD is designed to work in conjunction with your existing system hard disk drive. Therefore, it **MUST** be installed as a non-bootable secondary drive on your desktop computer.

1. Turn the computer off.
2. Disconnect the computer from any electrical sources to avoid potential damage to the motherboard and yourself.
3. Remove the side access panel (please refer to your computer's owner manual if you do not know how to do this).
4. Locate a spare bay underneath or near your main the hard disk drive bay.
5. Insert the SanDisk ReadyCache SSD into the spare bay with the data and power socket facing the rear face of the computer case.
6. Locate a thin SATA power connector from the computer's power supply and insert it into the power socket on the drive.
7. Insert one end of the SATA cable into the drive's SATA data socket.
8. Insert the opposite end of the SATA cable to a free SATA port located on the motherboard.
9. Close the computer case.
10. Plug the computer back in.

Installing ExpressCache software

You must download the ExpressCache software from <http://www.sandisk.com/ReadyCache>.

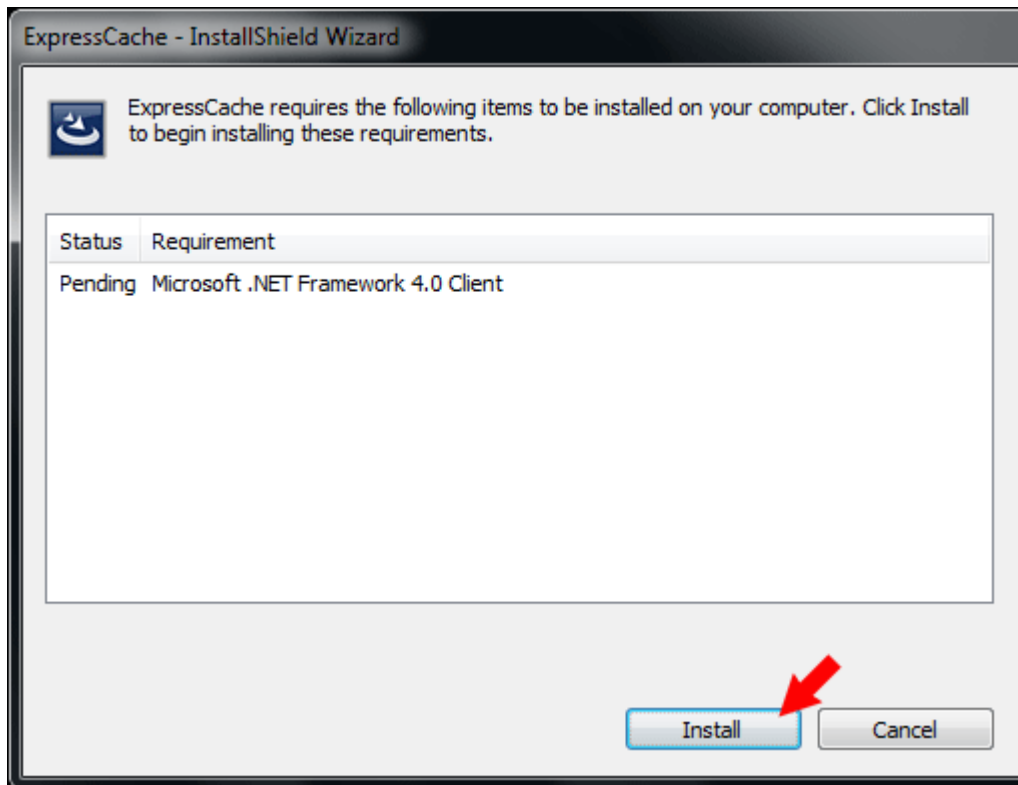
1. Double-click on **ExpressCacheSetup.exe**.
2. Select your language from the drop-down menu, and then click **Ok**.



Supported Languages:

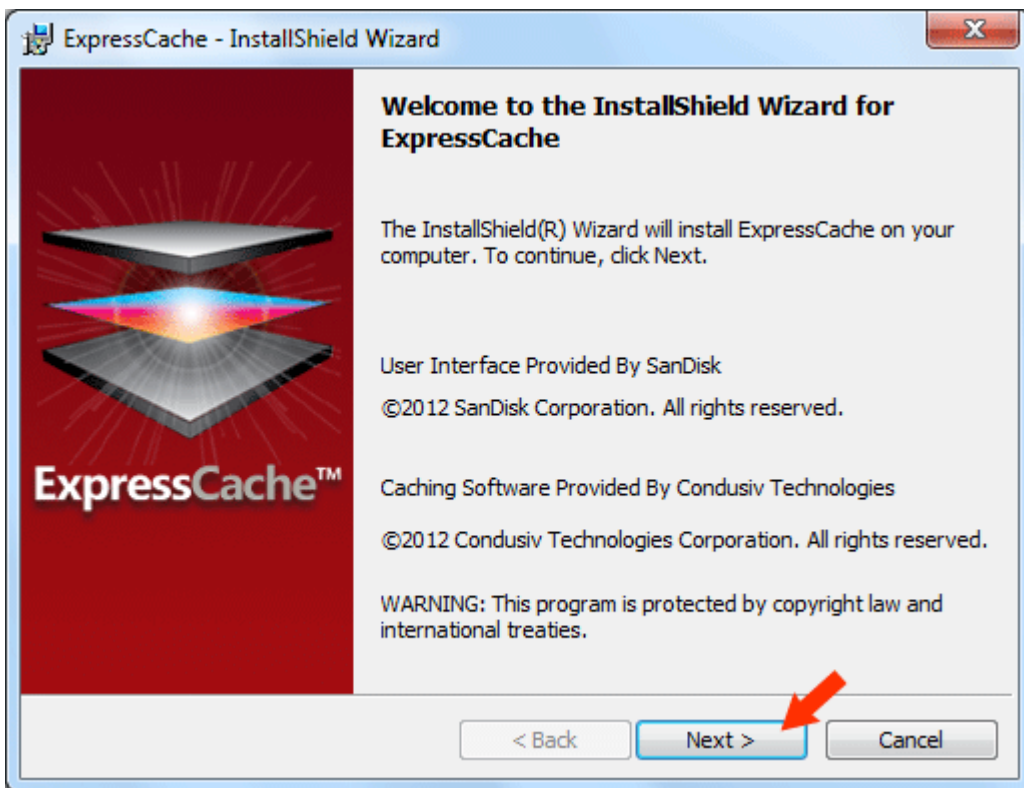
English, French, Italian, German, Spanish (Spain), Japanese, Simplified Chinese, Traditional Chinese, Portuguese (Portugal), Russian, Korean, Danish, Swedish, Turkish, Polish, Czech, and Dutch

Microsoft .NET Framework 4.0 Client is required to run ExpressCache software. The below message will appear if it is not installed on your computer.

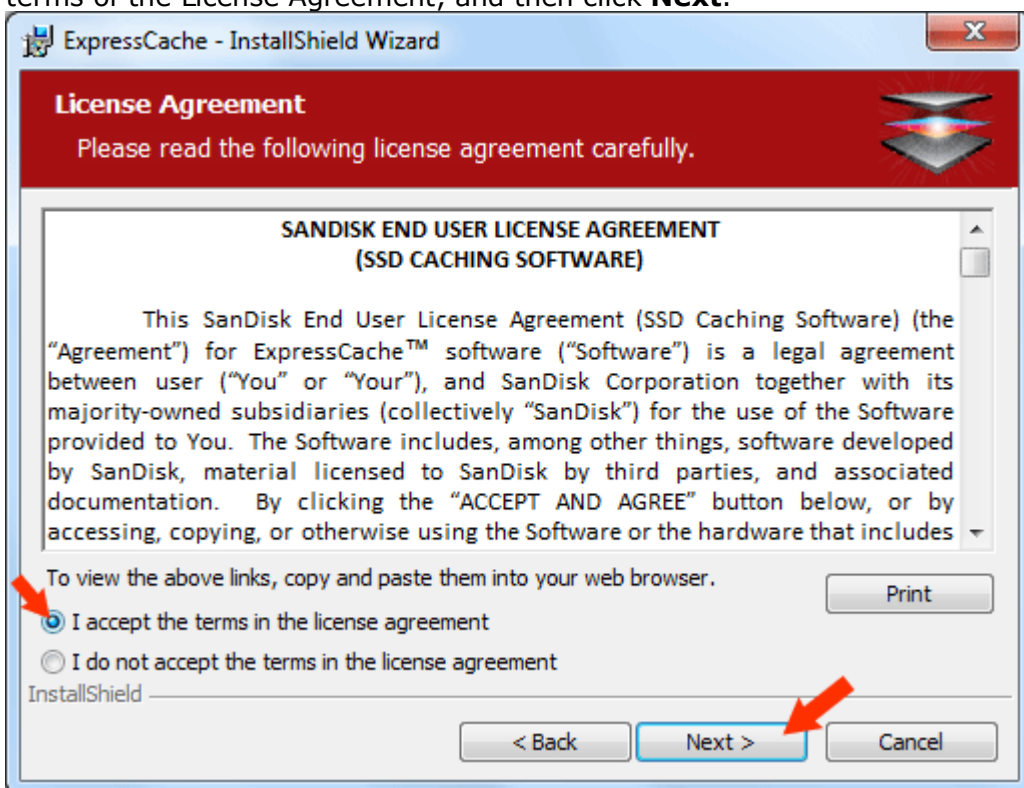


Click **Install** to continue.

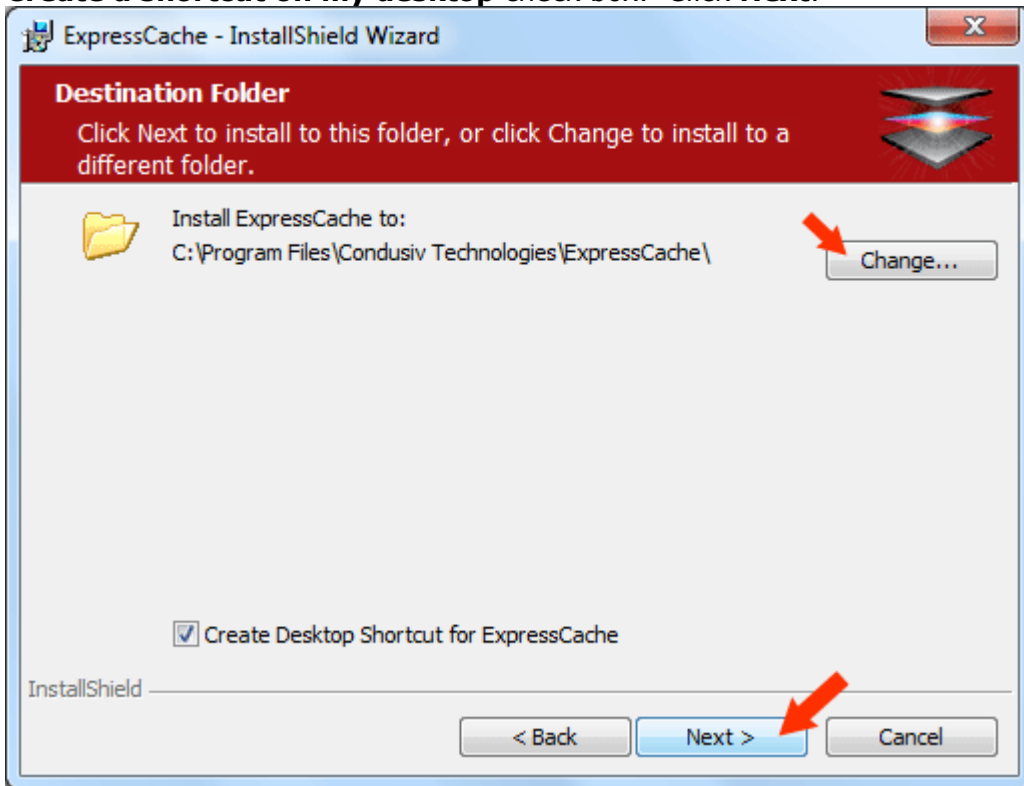
3. The **ExpressCache software Setup Wizard** will start. Click **Next** on the first screen.



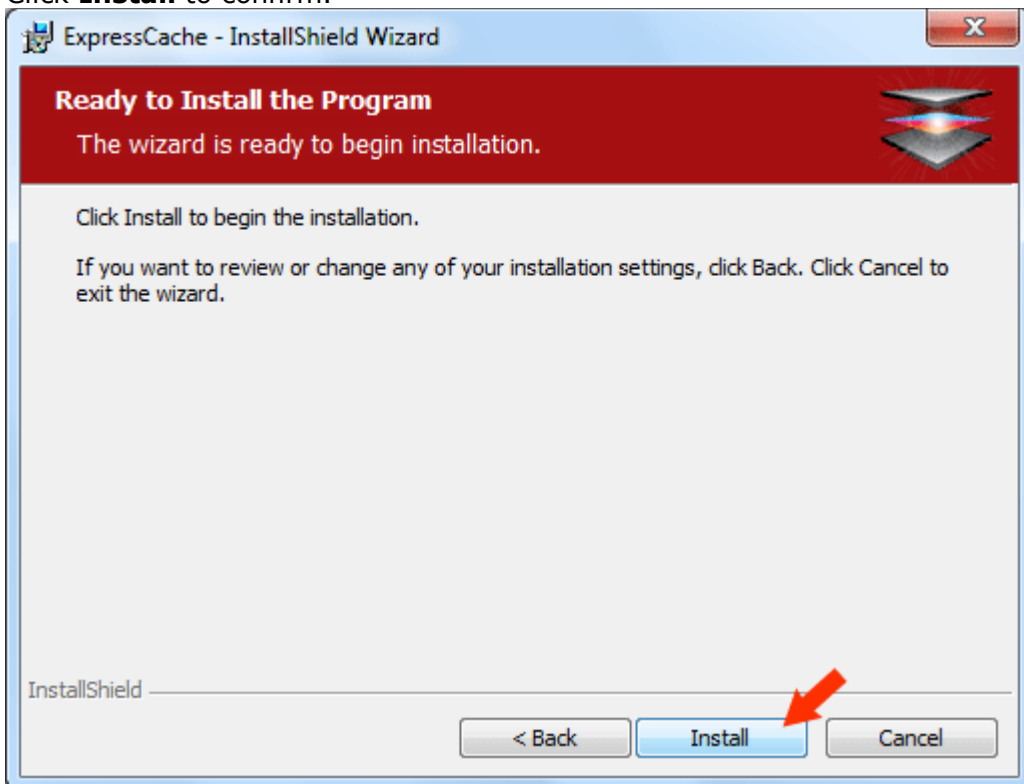
4. Read the License Agreement, click to select check box to confirm your acceptance of the terms of the License Agreement, and then click **Next**.



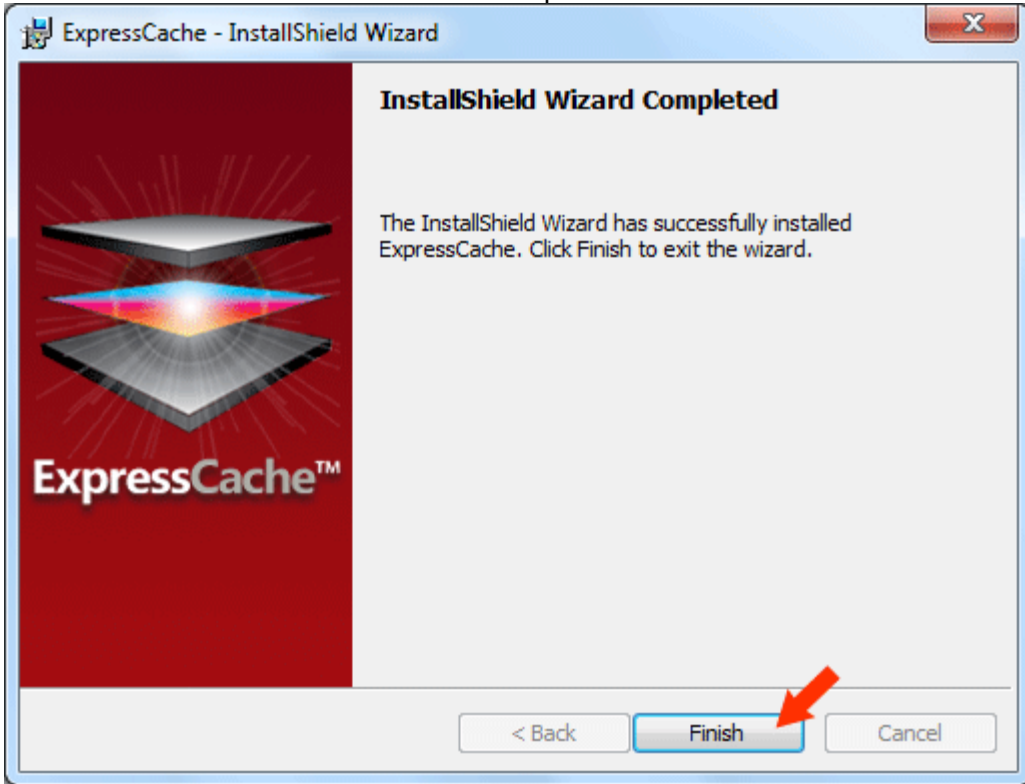
5. Click **Change** if you want the ExpressCache software to be installed to a folder other than the one specified. If you want to create a shortcut on your desktop, click to select the **Create a shortcut on my desktop** check box. Click **Next**.



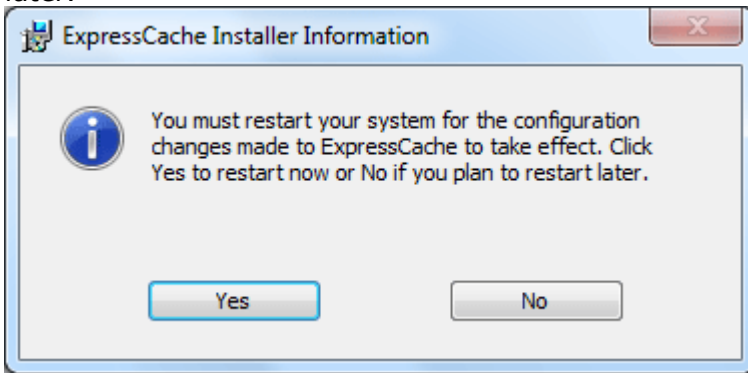
6. Click **Install** to confirm.



7. Click **Finish** after the installation is completed.



8. Your system needs to be restarted. Click **Yes** to restart now or **No** if you plan to restart it later.



9. The following message will appear after the initial computer reboot. By default, caching is disabled. To enable caching, you need to activate the ExpressCache software by clicking on **Activate**.



Activating ExpressCache

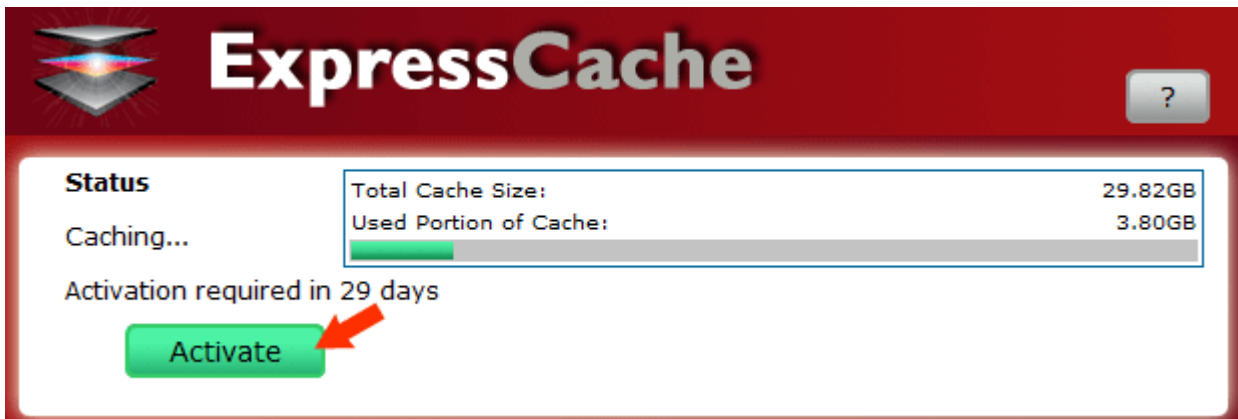
NOTE: Make sure you are connected to the internet before you activate ExpressCache.

1. Click **Start** > **ExpressCache**.
2. Click **Activate**.

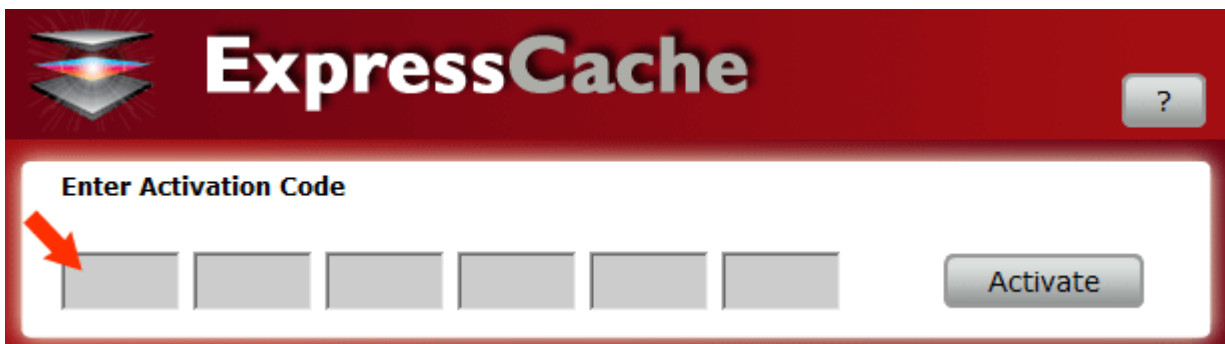
You can activate after the application is launched for the 1st time.



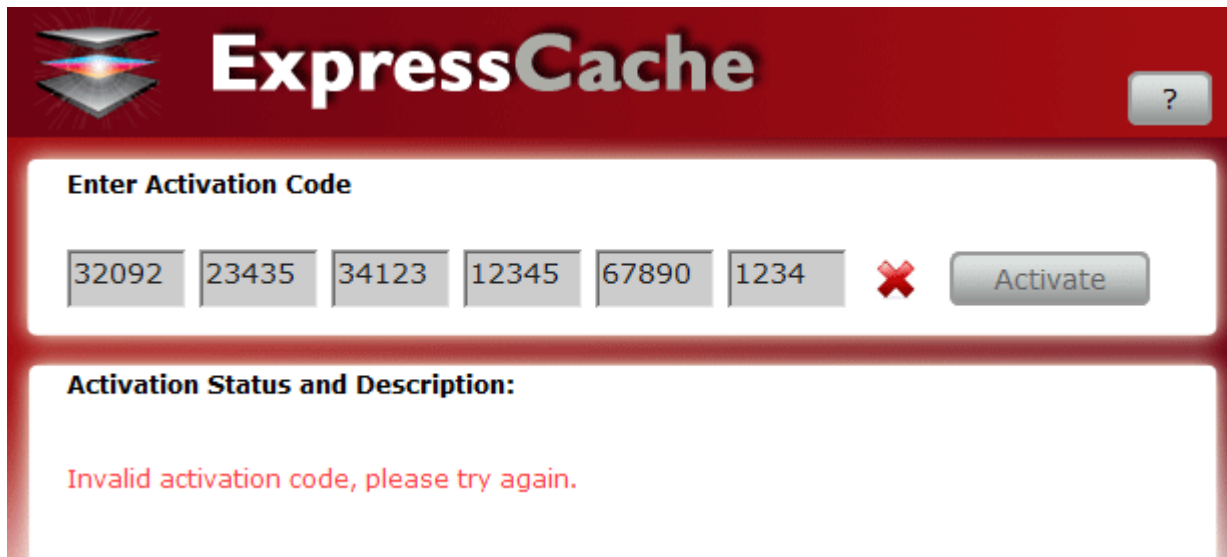
Or you can activate it later.



3. Enter the **activation code**.



An “**Invalid activation code, please enter again**” message will appear if you entered key incorrectly.



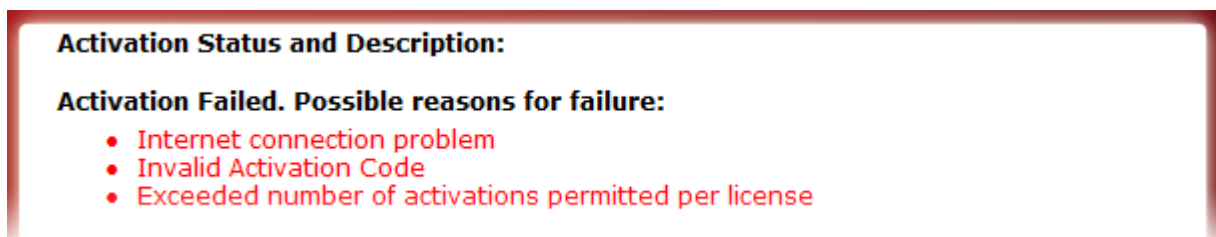
4. A green checkmark ✓ will appear when the activation code’s format was entered correctly. Click **Activate** to continue.



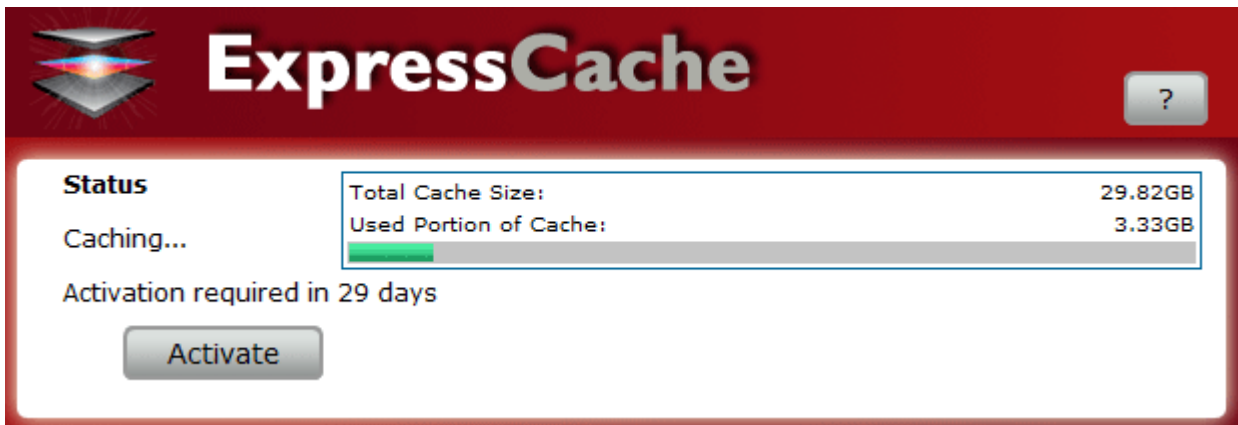
5. The below message appears if the activation code is valid and your computer is NOT connected to the internet. Click **OK** to continue. You will be able to use this software for up to 30 days after you enter a correct activation code. The caching status box will show you how many days left before activation must be done. You can try to activate again within 30 days when your computer is connected to the internet.

The ExpressCache software can be activated on up to 3 PC's using the same activation code and SanDisk ReadyCache SSD.

The ExpressCache software will ONLY work on a PC that has a SanDisk ReadyCache SSD installed. You can reinstall on the same computer an unlimited number of times



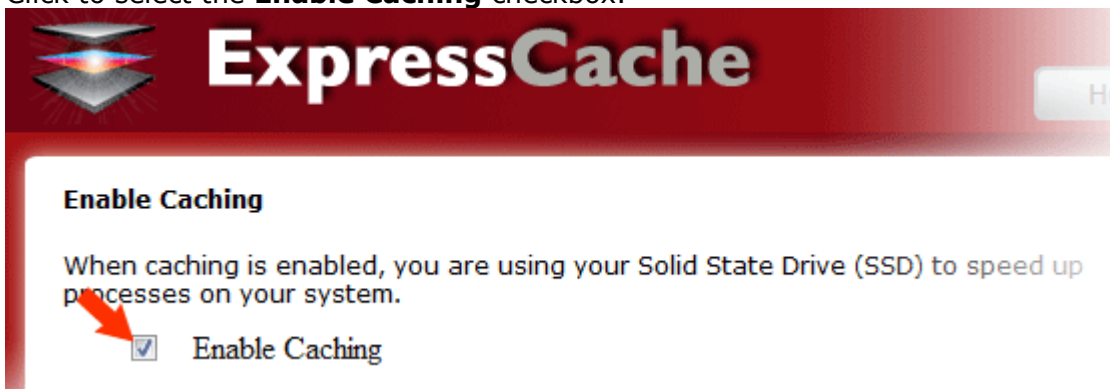
The Status box displays the number of days before activation is required.



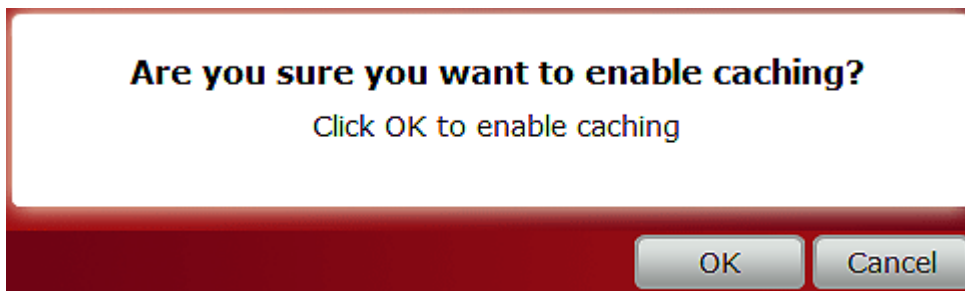
NOTE: To activate ExpressCache, simply mouse over the ExpressCache icon in the system tray and click **Activate**. If you do NOT activate ExpressCache within this time frame, caching will be disabled.

Enable Caching

1. Click **Start** > **ExpressCache**.
2. Click to select the **Enable Caching** checkbox.

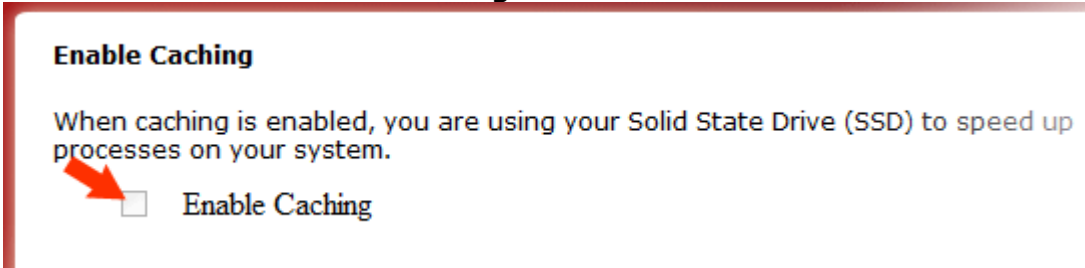


3. Click **OK**.

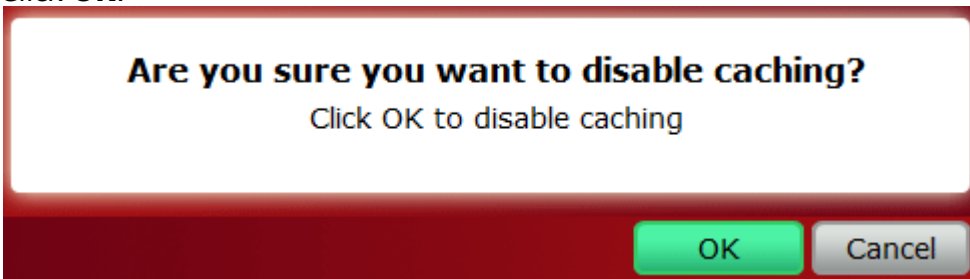


Disable Caching

1. Click **Start > ExpressCache**.
2. Click to unselect the **Enable Caching** checkbox.

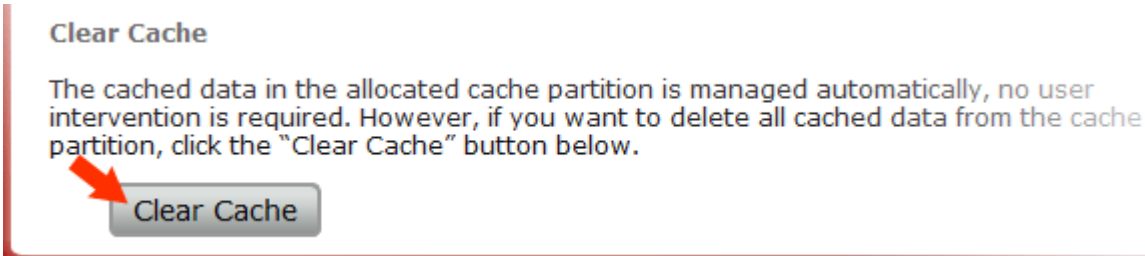


3. Click **OK**.

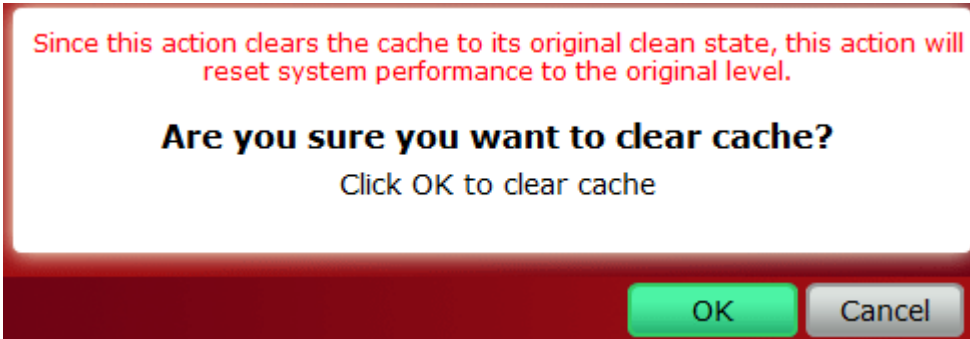


Clear the Cache

1. Click **Start > ExpressCache**.
2. Click **Clear Cache**.



3. Click **OK**.



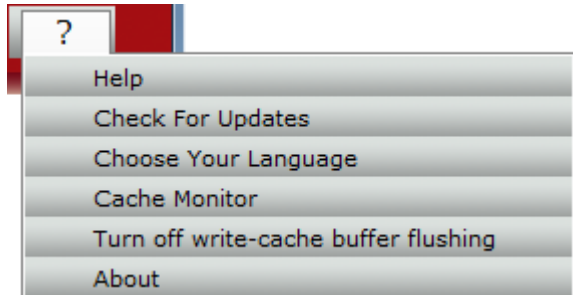
Cache Status

The status window displays the capacity of the SanDisk ReadyCache SSD drive, the amount of space used for caching, and whether caching is enabled.



Help

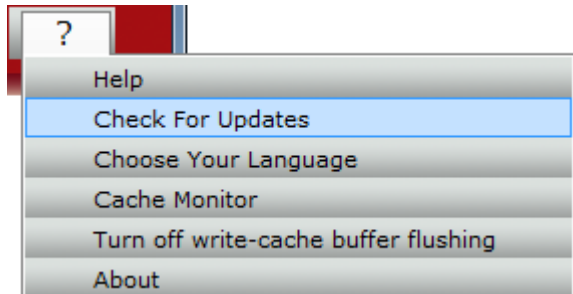
Click on the "?" icon and select **Help** to view the most commonly asked questions or troubleshooting tips. Your default web browser will be launched taking you to the SanDisk ReadyCache SSD support website.



Check for Application Update

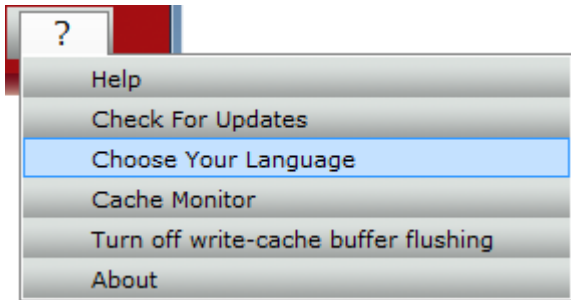
Click on the "?" icon and select **Check for Update** to manually check if an updated application is available.

NOTE: Every time the application starts, it will check for updates and inform you if an update is available. This menu item allows you to check manually at any time.



Choose Your Language

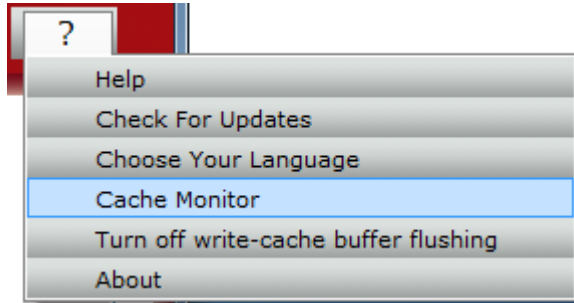
Click on the "?" icon and select **Choose Your Language**.



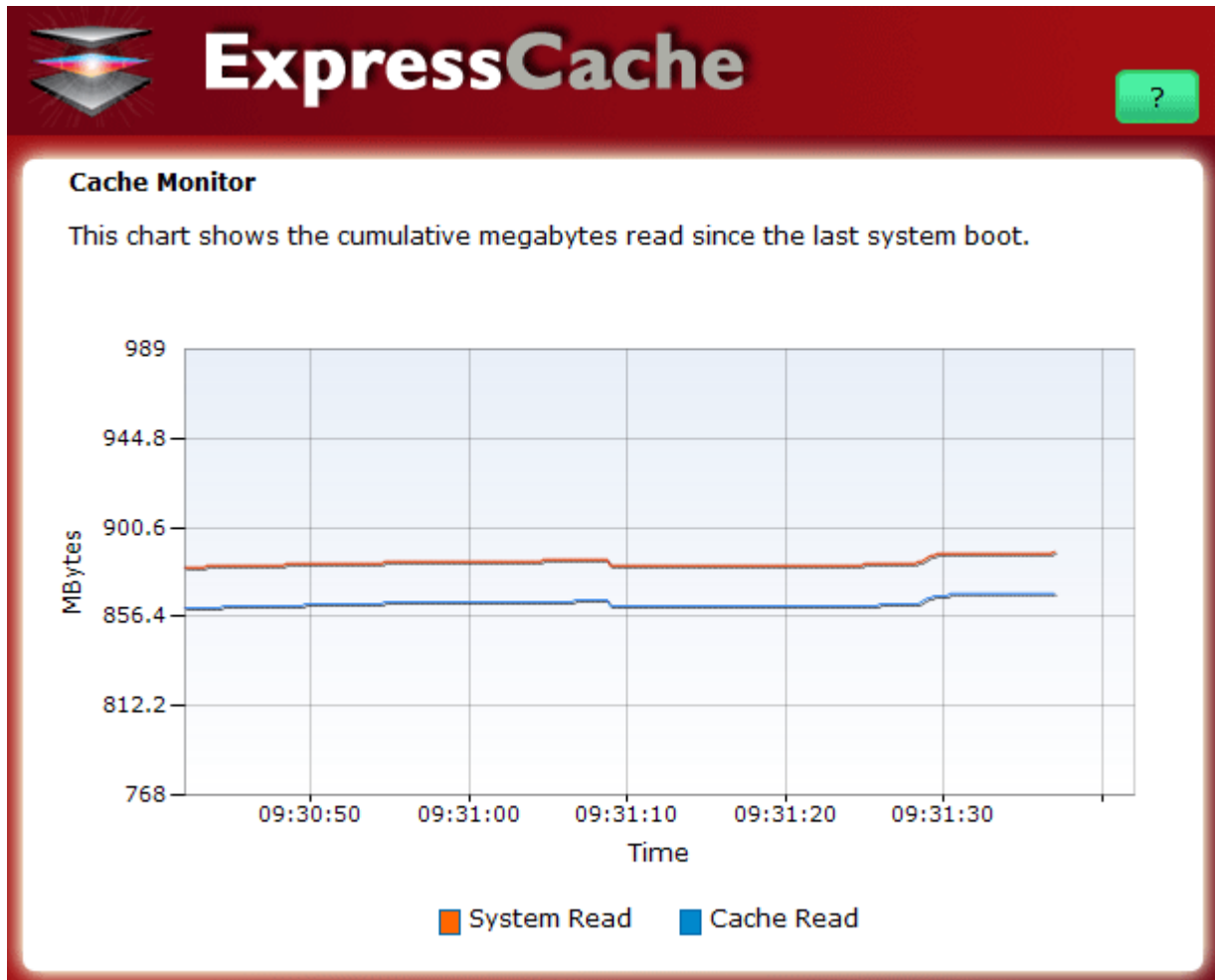
Select a new language then click **OK**.



Cache Monitor

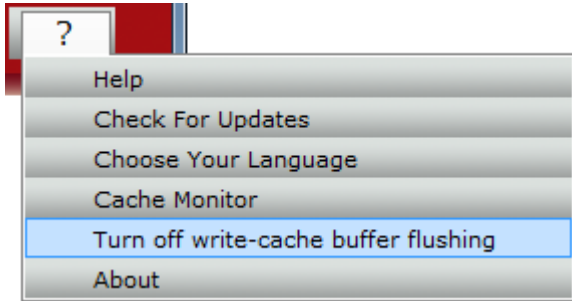


To view the cumulative megabytes read since the last system reboot during the last minute, click on the "?" icon and select **Cache Monitor**. The cache monitor chart is refreshed automatically every 1/5th of a second.



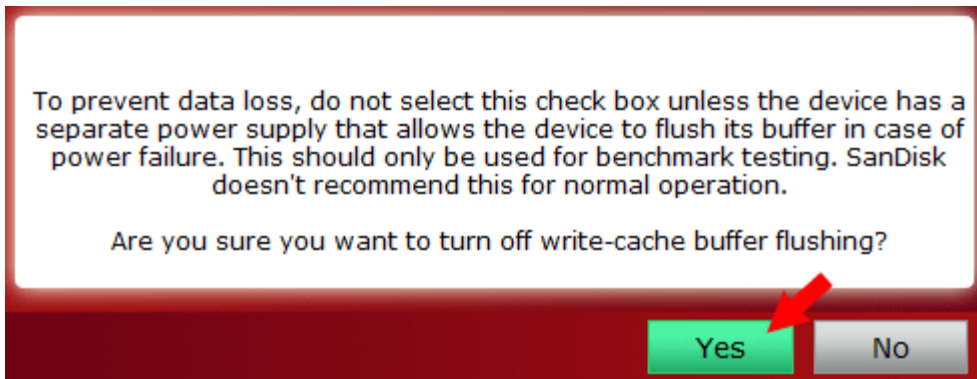
- The orange line shows the System Read: The cumulative megabytes read from all system drives (HDDs and SSDs) since the last system boot.
- The Blue line shows the Cache Read: The cumulative megabytes read from the SanDisk ReadyCache drive since the last system boot.

Turn off write-cache buffer flushing

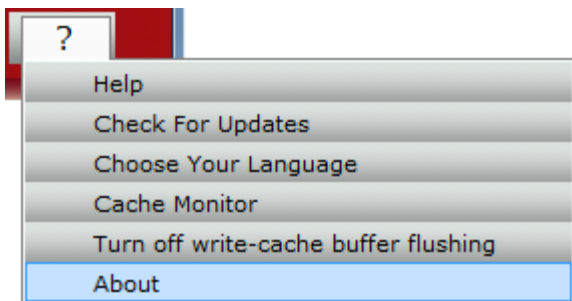


To turn off write-cache buffer flushing, click on the "?" icon, select **Turn off write-cache buffer flushing**, and then click Yes.

WARNING: Turning off write-cache buffer flushing may cause data loss if you experience a power failure and your device is not connected to an external power source. Please be sure that your device is connected to an external power source before you turn off write-cache buffer flushing.

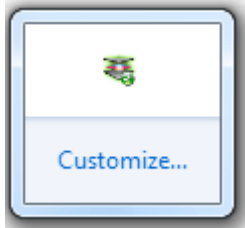


About



To view the version of ExpressCache or activation code you are using, click on the "?" icon and select **About**.

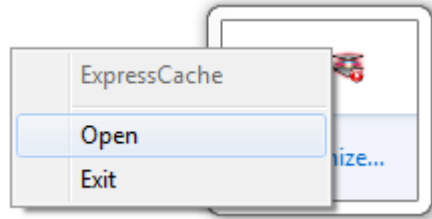
System Tray Icon



The color displayed on the ExpressCache icon shows if caching is On or Off

- **Green** color: Caching is On
- **Red** color: Caching is Off

In the **System Tray**, right-click on the **ExpressCache** icon to launch or exit the application.



Alternatively, you can open or close the ExpressCache application by simply clicking on its icon in the system tray.

To view the status of ExpressCache, hover over its icon in system tray icon.

- ExpressCache (Caching enabled)
- ExpressCache (Caching enabled; Not activated)
- ExpressCache (Caching disabled)
- ExpressCache (Caching disabled; Not activated)
- ExpressCache (Caching disabled; Expired)

Frequently Asked Questions

Please visit [SanDisk Knowledgebase](#) for the most frequently asked questions and troubleshooting tips.

SanDisk is a trademark of SanDisk Corporation, registered in the United States and other countries. SanDisk ReadyCache is a trademark of SanDisk Corporation. Conduvis, ExpressCache and the ExpressCache logo are trademarks of Conduvis Technologies Corporation. All other brand names mentioned herein are for identification purposes only and may be the trademarks of their respective holder(s).