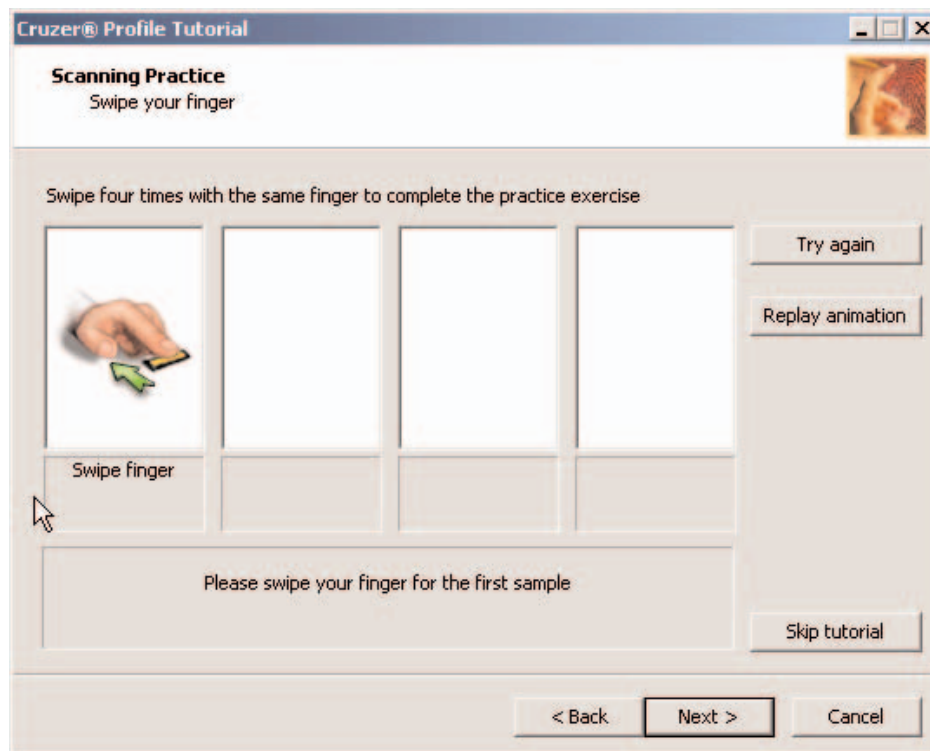


Cruzer® Profile

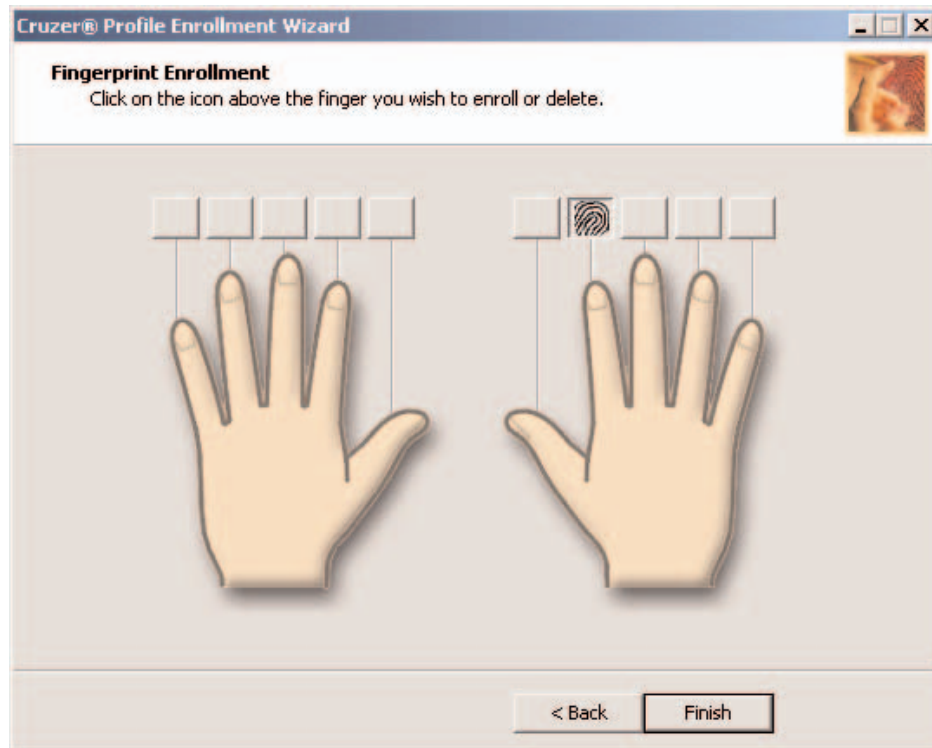
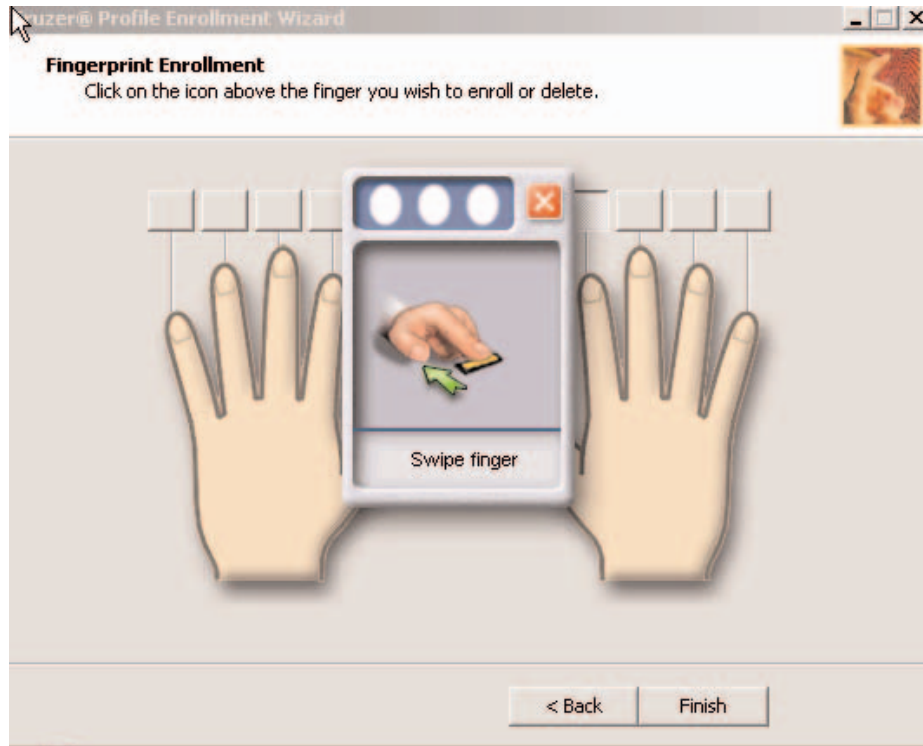
Quick Start Guide

Initializing the Cruzeiro Profile

1. Insert the Cruzeiro Profile into an open USB port (**NOTE:** Please use a High powered USB Hub Port. The Cruzeiro Profile cannot be used in monitor or keyboard USB ports. Monitor and keyboard ports are low powered.)
2. The Cruzeiro Profile program will auto launch
 - a. Agree to the End User License Agreement and click "OK".
 - b. Follow the Enrollment Tutorial (Tutorial will run by default and provides an enrollment practice screen). (**NOTE:** Enroll two fingers (one from each hand) to ensure continued access to device in event of injury.)
 - i. Please read the instructions on how to enroll your fingers.
 - ii. Quality is important. Lay finger flat on the sensor with the sensor underneath the last knucklebone.
 - iii. Slide finger slowly and smoothly across the Biometric sensor without lifting your finger.
 - iv. Allow finger to come off the end of the Cruzeiro Profile before shifting your finger.
 - c. Complete Practice session.

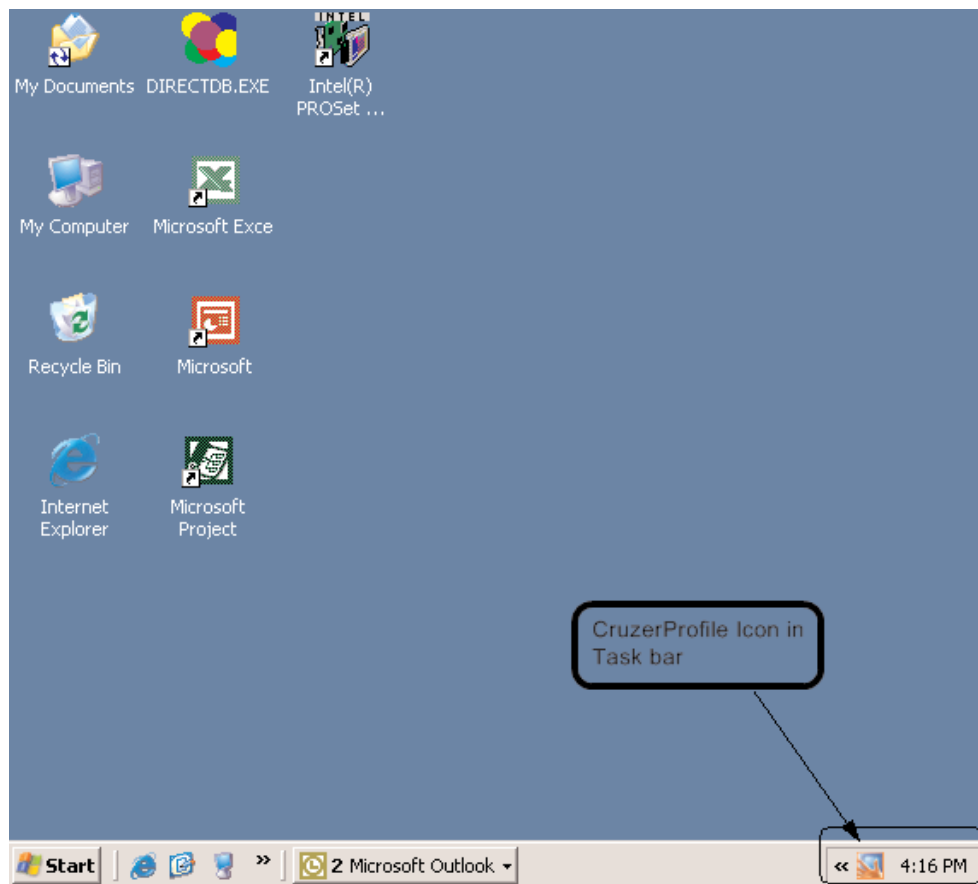


d. Finger Print Enrollment.

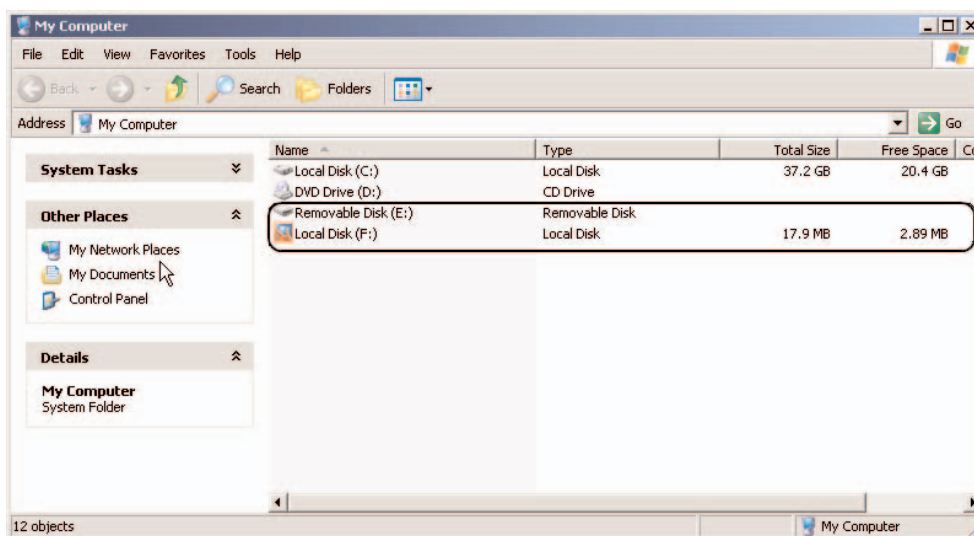


- i. Select the icon above the finger you wish to enroll and swipe three times to achieve enrollment.
- ii. Select a finger on the other hand and repeat step i.

- e. Click "Finish". You have now completed the enrollment process.
- 3. Upon completion of the enrollment process, you will see the Cruiser Profile icon in the system tray. The system tray is located on the right side or bottom of the task bar.



- 4. Windows will load the Mass Storage driver and two drive letters will enumerate in "My Computer".



- a. The first drive is a Mass Storage drive titled "removable Disk".
- b. The second drive is the Cruiser Profile secure software drive. (**NOTE:** Do not edit, delete or manipulate this drive in any way.)

Edit, Delete or Add new Fingerprints

1. Right click on the Protector Suite icon and choose "Edit Fingerprints"
2. The Enrollment wizard will start
3. Select "Next"
4. On the next screen either:
 - a. To add a new fingerprint, click on an open finger icon and swipe the sensor three times with a new finger.
 - b. To delete a fingerprint, select the finger icon of the one you wish to remove and click "yes" to delete.

Utilizing CruiserPass™

To register a new site with CruiserPass please do the following:

1. Open Internet Explorer
2. Navigate to the desired website (for example www.yahoo.com)
3. Go to the login page for the website (In the upper left corner of the Internet Explorer window, you will see a bubble pop up, telling you that you are on a page with fields that are eligible for enrollment)
4. Enter your user name and password (**DO NOT hit enter**)
5. Select the Profile Hot key by pressing 'CTRL+ALT+HOME'
6. The sensor swipe window will appear
7. Swipe finger (The CruiserPass bubble will appear in the upper left corner of the Internet Explorer screen, telling you that you have successfully registered the login)
8. You have now successfully enrolled a password in CruiserPass

Accessing Stored Passwords

1. Click on the Cruiser Profile icon in the task bar
2. Select "Registered sites"
3. Select the site you wish to access

4. The sensor swipe window will appear
5. Swipe one of your registered fingers
6. Internet Explorer will launch to the desired site
7. Your user name and password will auto populate
8. You are now logged into your desired site

NOTE: All passwords are stored securely on the Cruiser Profile NOT on the host PC

To Manage, Rename or Delete Passwords

1. Click on the Protector Suite Icon
2. Choose "Settings"
3. The sensor swipe window will appear
4. Swipe your finger
5. A window will open with three tabs: Options, CruiserPass, Registration
6. Select the "Registration" Tab
7. Select the Site you wish to edit. You can then edit, rename or delete the registration
 - a. You can also export this file to the host PC as a backup or import an existing Protector Suite backup file

WINDOWS LOGIN

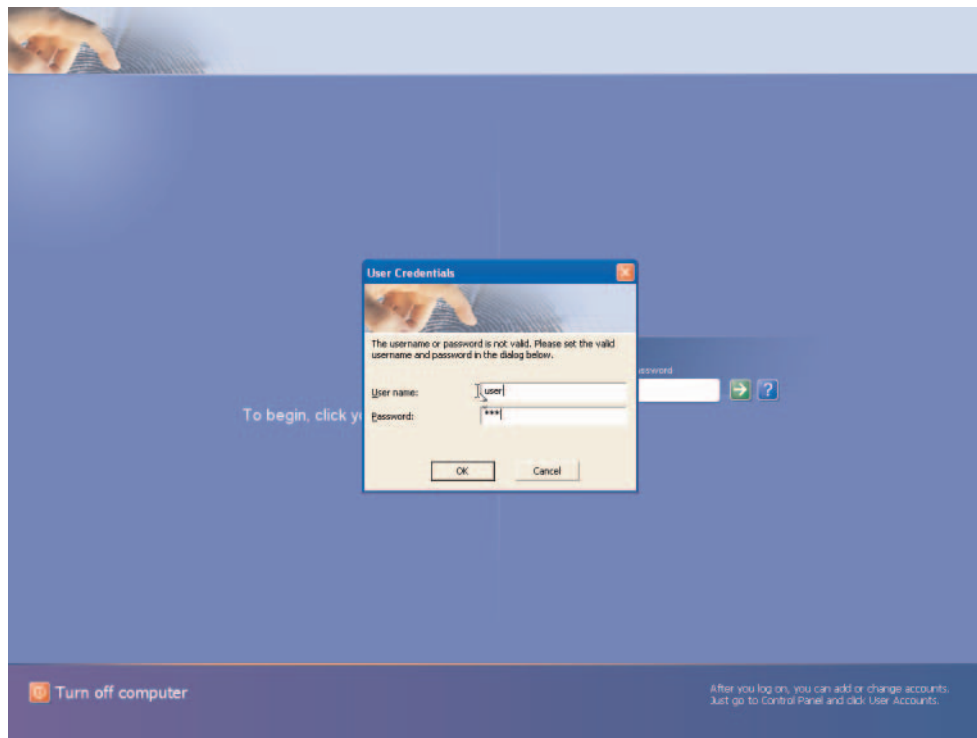
Installing the CruiserLogin™ application

1. Right click on the Cruiser Profile drive letter.
2. Launch the CruiserLoginSetup application by double clicking on the file.
3. After reading the welcome information, press Next.
4. After reading the End-User License Agreement, select "I accept the license agreement" and then press the "Next" button.
5. If desired, select the location where the CruiserLogin application will be installed. Then press "Next".
6. If you are satisfied with the selected installation options, press "Next". Otherwise, press "Back" for changes.

7. The CruiserLogin application will then be installed.
8. Once the application is completely installed, press "Finish".
9. In order to complete the installation of the CruiserLogin application, the system must be restarted. Press "Yes" to restart the system. Also, please remember to save and close all open files before restarting the system.

Using the CruiserLogin application

1. Simultaneously press the Ctrl-Alt-Home keys.
The sensor swipe window will appear. Swipe your finger as indicated.
 - a. The User Interface will indicate if fingerprints are not enrolled. Please enroll by following the instructions above.
2. The first time you use the CruiserLogin application, a window will ask you for your User Credentials. Enter this information and press "OK".



The application will log you into your system.

3. On all invocations after the first, fingerprint authentication will automatically log you into your system.