



## User Manual

# SanDisk®

 **sansa.fuze™** Media Player

### Technical Support

Knowledgebase: <http://kb.sandisk.com>

Forum: <http://forums.sandisk.com/sansa>

For more information on this product, please visit [http://kb.sandisk.com/app/answers/detail/a\\_id/3249](http://kb.sandisk.com/app/answers/detail/a_id/3249)

Fuze-UM809-ENG

Compatible with



# ▶▶ Table of Contents

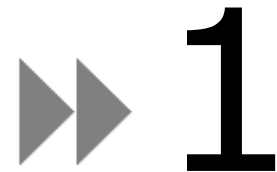
Important Safety Instructions .....	3
Important – Hearing Safety Levels Info .....	3
Sansa® Fuze™ Media Player Overview .....	5
Features .....	5
Minimum System Requirements .....	6
Package Contents .....	6
Sansa Fuze media player at a Glance .....	6
Main Menu Options .....	8
Playback Screen .....	9
Battery .....	9
Charging .....	10
Basic Usage .....	11
Power Switch .....	11
Power On .....	11
Power Off .....	11
Reset .....	11
Hold Function .....	11
Thumbwheel .....	12
Connecting to your Computer .....	12
Removing the player from your computer: .....	13
Updating the Firmware .....	14
Formatting the Player .....	14
Loading Content .....	15
Loading Music .....	15
Drag and Drop (Windows) .....	15
Drag and Drop (Mac) .....	15
Windows Media Player .....	16
Loading Photos and Videos .....	20
Playing Content .....	21
Playing Music .....	21
Music Options .....	22

# ▶▶ Table of Contents

Playing music from a preloaded microSD™ Card .....	23
microSD™ card with content .....	23
slotMusic™ card .....	24
slotRadio™ card .....	24
Playing Audiobooks .....	25
Audiobooks Options .....	25
Watching Videos .....	26
Video Options .....	26
Viewing Photos and Slideshows .....	27
Photo Options .....	27
FM Radio (if applicable) .....	29
Listening to FM Radio .....	29
Programming FM Presets .....	29
Radio Options .....	30
Recording .....	31
Voice Recording .....	31
Deleting Content .....	32
Settings .....	33
Wallpaper Settings .....	33
Display Art in Lists .....	33
Backlight .....	33
Power Saver .....	33
Language .....	34
Date & Time .....	34
Brightness .....	34
Volume .....	34
Reset Factory Settings .....	34
Info .....	34
USB Mode .....	35
Format .....	35
Press and Hold .....	35

# ▶▶ Table of Contents

Tips & Troubleshooting.....	36
Learn More, Service, and Warranty Information.....	38
Getting Technical Support.....	38
SanDisk Limited Warranty .....	38
End User License Agreement.....	39



*This chapter provides you with safety instructions, hearing safety, and cleaning tips for your Sansa® Fuze™ media player.*

# Important Safety Instructions

**PLEASE READ THE SAFETY INSTRUCTIONS CAREFULLY BEFORE USING YOUR SANSA MEDIA PLAYER.**

1. Read this entire manual to ensure proper usage.
2. Keep this User's Manual for future reference.
3. Do not use headphones/earphones while driving, cycling, or operating any motorized vehicle. This may create a traffic hazard and may be illegal in some areas. It can also be dangerous to play your music with headphones/earphones at high volume while walking, or engaged in other activities. You should exercise extreme caution and discontinue use in potentially hazardous situations.
4. **Avoid using headphones/earphones at high volume. Hearing experts advise against continuous loud and extended music play. Keep the volume at a moderate level, so that you are better able to hear outside sound and to be considerate of the people around you.**
5. Keep your player away from sinks, drinks, bathtubs, showers, rain, and other sources of moisture. Moisture can cause electric shocks with any electronic device.

## Cleaning Tips

Follow these tips to keep your player working well for a long time:

- Clean your player with a soft lint-free cloth.
- Do not allow young children to use your player unsupervised.
- Never force any connector into the ports of your player or your computer. Make sure your connectors are the identical shape and size before you connect.
- Do not disassemble, crush, short-circuit or incinerate the battery as it may cause fire, injury, burns or other hazards.

# Important – Hearing Safety Levels Info

## READ THIS BEFORE USING YOUR SANSА PLAYER

Congratulations on the purchase of your Sansa media player!

Your media player is equipped with a variety of features. To help you maximize your listening pleasure, SanDisk would like to advise you that it is important to use your headphones with your media player at a safe hearing level.

Exposure or repeated exposure for an extended period of time to music and other sounds that are too loud can cause damage to your hearing resulting in temporary or even permanent “noise-induced hearing loss”.

Symptoms of hearing loss increase gradually with prolonged exposure at high levels of volume. Initially, you may not even be aware of the loss unless detected with a hearing test.

### Hearing levels

To help you understand what may be considered a safe hearing level, the following examples are included for your reference.

Examples of Typical Approximate Sound Level:

	<b>Sound Level (dB)</b>
Refrigerator humming	40
Normal conversation	60
City traffic	80
Motorcycles and lawnmowers	90 #
Rock concerts	110-120 #
Firearms	120-140 #

\* A decibel (dB) is a unit of relative measurement of the strength of sound wave. In decibels (dB), a measured signal level doubles with every additional 3 dB.

# These sound decibel levels are considered harmful with extended exposure.

Information courtesy of the National Institute of Deafness & Other Communication Disorders (NIDCD) <http://www.nidcd.nih.gov/health/hearing/noise.asp>.

### For your safety!

Your hearing may adapt to higher volumes of sound. In order to prevent any harmful impact to your hearing, you must control the sound emanating from your headphones and set the media player volume to a low setting where you can hear it clearly and comfortably.

Studies, including one from NIDCD indicate that sounds of less than 80 decibels, even after long exposure, are unlikely to cause a hearing loss. Listen to your media player at such a level that you can still hear conversation and other people in your environment without shouting when you attempt to converse.

It can also be dangerous to play your music with headphones/earphones at high volume while walking or engaged in other activities. You should exercise extreme caution and discontinue use in potentially hazardous situations.

Do not use headphones/earphones while driving, cycling, or operating any motorized vehicle. This may create a traffic hazard and may be illegal in some areas.

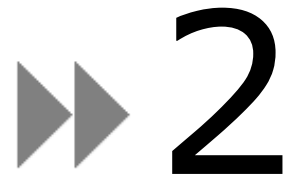
## Disposal Instructions

Do not dispose of this device with unsorted waste. Improper disposal may be harmful to the environment and human health. Please refer to your local waste authority for information on return and collection systems in your area.

### **NOTE: For Home and Personal Use**

This product is intended to be used for recording and playback for your home and personal enjoyment. Copying and commercial use of copyrighted material without permission of the copyright owner may be prohibited by law. Use of your media player, in compliance with all copyright and applicable intellectual property laws, remains the responsibility of the user of the product.





*This chapter will familiarize you with the features and functionality of your Sansa® Fuze™ player.*

# Sansa® Fuze™ Overview

Congratulations on your purchase of a Sansa® Fuze Media player!

Sansa® Fuze is a high performance portable digital audio/video player with a large bright 1.9" color screen, a digital FM tuner, a built-in MIC. You can listen to FM radio broadcasts and record voice with the built-in microphone. Additionally, you can use the microSDHC card slot to expand your storage and/or move files via microSDHC cards.

## Features

- Vibrant 1.9" (220x176) color TFT screen for brilliant views of your video, photos, and album art.
- Supports MP3, WAV, WMA, secure WMA, FLAC, Ogg-Vorbis, and audiobooks formats<sup>†</sup>.
- Displays embedded album art
- Video compatible with MPEG4 (SP) QCIF+ 20fps. Additional video formats are supported via the Sansa Media Converter software (available for download at [http://kb.sandisk.com/app/answers/detail/a\\_id/4431](http://kb.sandisk.com/app/answers/detail/a_id/4431))<sup>†</sup>.
- Supports photo files converted and transferred to the player through the Sansa Media Converter software.
- Includes an integrated FM radio for listening to live-broadcast FM radio programs.
- Supports voice recording function with built-in microphone.
- MicroSD/SDHC card slot supports additional 4GB\* and higher capacities.
- Plays slotMusic™ and slotRadio™ cards<sup>††</sup>.
- Allows users to store data on the internal memory.
- Rechargeable battery lasts up to 24 hours of audio playback or 5 hours of video playback\*\*.
- Windows 7 Certified

\* 1 gigabyte (GB) = 1 billion bytes. Some of the listed capacity is used for formatting and other functions, and thus is not available for data storage.

\*\* Based on continuous audio playback at 128 kbps MP3; video playback at QVGA 512kbps H.264; battery life and performance may vary depending upon usage and settings; battery not replaceable.

<sup>†</sup> Videos (MPEG-4 (SP) QCIF+ 20fps other video file formats supported through Sansa® Media Converter software available from Sansa.com), Music (MP3, WMA, secure WMA and Audible audio file formats), Photos (JPEG). For additional specifications, please visit the SanDisk website.

<sup>††</sup> slotRadio card playback support requires Fuze firmware version 01.02.26A or higher.



## Minimum System Requirements

- Windows XP SP2
- Windows Media Player v10
- Intel Pentium class PC or higher
- Internet access (broadband recommended)
- CD-ROM drive (if product package includes a CD)
- USB 2.0 port for hi-speed transfers and charging

## Package Contents

- Sansa Fuze media player
- USB 2.0 transfer cable
- Earphones
- Quick Start Guide

## Sansa Fuze Media Player at a Glance



- |       |                      |   |
|-------|----------------------|---|
| 1     | Play/Pause           | Toggles between Play/Pause  |
| <hr/> |                      |   |
| 2     | Left/Previous/Rewind | <ul style="list-style-type: none"> <li>• Navigates back a screen</li> <li>• On Play Only – press and hold for Rewind</li> </ul> |
| <hr/> |                      |   |
| 3     | microSDHC Card Slot  | Insert microSD/microSDHC, slotMusic, slotRadio card here  |

4	MIC	Built-in microphone (internal)
5	Thumbwheel	<ul style="list-style-type: none"> <li>List view – Navigates Up and Down</li> <li>Volume Control</li> <li>Brightness Control</li> <li>Rating</li> </ul>
6	Sansa Dock Connector	Connect Sansa cable here
7	Submenu/Options	Quick Access to contextual Option List
8	Headphone Jack	Insert headphone here
9	Select Button	<ul style="list-style-type: none"> <li>Press to make a selection</li> <li>Press and Hold to add to Music or Photo Go List</li> </ul>
10	Right/Forward	<ul style="list-style-type: none"> <li>Navigates forward a screen</li> <li>Press for next track</li> <li>On Play Only – press and hold for Fast Forward</li> </ul>
11	Home/Menu	<ul style="list-style-type: none"> <li>Return to the Main Menu</li> <li>Return back to the play screen</li> </ul>
12	Display Screen	Displays the status of the Sansa media player
13	Power Switch	<ul style="list-style-type: none"> <li>Slide up to turn on the player</li> <li>Slide up and hold for 2 seconds to turn off the player</li> <li>Slide up and hold for 10 seconds to reset your player</li> </ul>
14	Hold/Lock Indicator	Factory sets to locked position (shows orange color). Slide to center position for controls. When locked, all controls are disabled to prevent accidental activation of controls.

## Main Menu Options



**Music** – allows you to browse and listen to music, audio books, recordings, or podcasts.



**Video** – allows you to browse and watch videos.



**Photo** – displays photos from lists, thumbnails, Photo Go List, and Slideshows.



**FM Radio** (if applicable) – allows you to listen to FM broadcast radio and save presets.



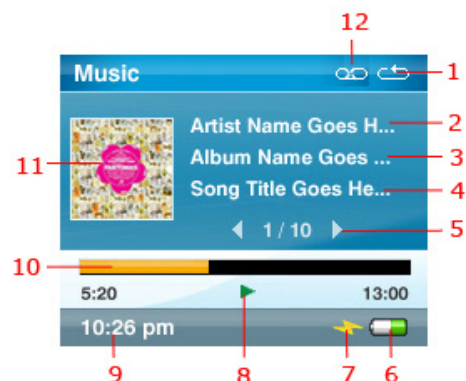
**Voice** – allows you to do voice recording using built-in microphone.



**Settings** – allows you to view or customize the Sansa media player features.

**slotRadio** – allows you to listen to slotRadio cards.

## Playback Screen



1	Repeat	Indicates that the Repeat function is enabled
2	Artist Name	Displays artist name
3	Album Name	Displays name of the album
4	Track Name	Displays title of the song
5	Track Number	Displays current track number and total number of tracks
6	Battery	Displays battery level
7	Charging	Indicates player is being charged
8	Play/Pause	Displays music or recording file playback status
9	Time	Display the time (Hour and minutes)
10	Progress Bar	Displays progress of the current track
11	Album Artwork	Displays artwork of the album
12	Shuffle	Indicates that the shuffle function is enabled

## Battery

The Sansa® Fuze media player comes with an internal rechargeable battery. The battery is not replaceable. To use the player for the very first time, remember to fully charge the battery. You can charge your player using the USB port of your computer.

**NOTE:** Some low-power USB ports may not provide enough power to charge the Sansa player. If the device does not charge, use the USB port located at the rear of the computer.

## Battery Level Indicator

The battery level indicator is located at the bottom-right corner of the screen.



Battery Full



Battery Low

## Charging

1. Connect the larger end of the Sansa cable into the Sansa media player.
2. Connect the smaller end of the Sansa cable into an available USB port on the computer.
3. The computer must be on for all the USB ports to charge the battery. Your Sansa will show connected and the yellow charging indicator will appear. The battery level indicator will blink while charging. You will not be able to play music, watch videos, or view photos while the player is connected to the computer.
4. To stop recharging, simply disconnect the USB cable.

The battery can also be charged using an AC adapter (not included) or a car adapter (not included); you will be able to play your device while charging with one of the adapters.

If your player is not recognized by your computer, make sure you have Windows Media™ Player version 10 or higher installed. You can also change the **USB Mode** to **MSC** if you do not have Windows Media Player. For Mac, ensure that **USB Mode** is set to **Auto Detect** or **MSC** mode. See [Section 9 – Settings](#) for more details.



*This chapter provides you the basic usage instructions for your Sansa® Fuze™ media player.*

# Basic Usage

## Power Switch

The power switch is used to turn the player on or off as well as resetting it.

### Power On

Slide the **Power** switch up to turn on the player. The Blue Ring will light up and the Main Menu will appear after it has been booted up.

### Power Off

Slide the **Power** switch up and hold it for about 2 seconds to turn off the player.

**NOTE:** To prevent accidental power on, move the **HOLD** switch to the locked position.

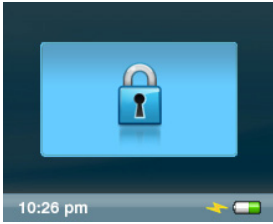
### Reset

To reset your player, slide the **Power** switch up and hold it for approximately 10 seconds.

### Hold Function

All the function keys will be disabled once **Hold** is engaged by sliding the **Power** switch down until an orange bar appears. All the buttons on the player will not operate when **Hold** is active. Please note that the **Lock** function only works when the player is on.

The following image will appear on the display screen if any button is pressed while the device is in the Locked position. The music should continue to play even if the device is locked.



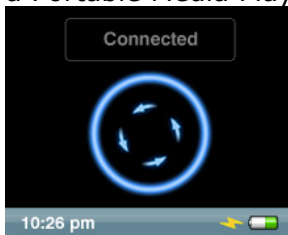
To **unlock** the player, slide the **Power** switch up.

## Thumbwheel

The thumbwheel is used to navigate the player as well as control the volume and rate tracks. Turn the wheel **clockwise** to scroll down through menu items or to increase the volume during playback. Turn the wheel **counterclockwise** to scroll up through menu items or decrease the volume during playback.

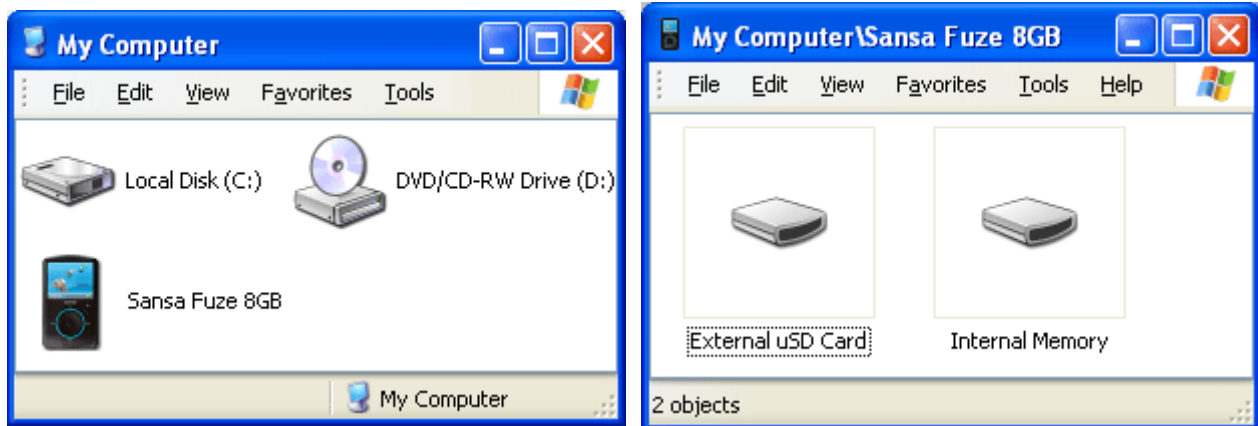
## Connecting to your Computer

1. Connect the smaller end of the Sansa cable into an available USB port on your computer.
2. Connect the larger end of the Sansa cable into the dock connector of your player.
3. Your player will show "Connected" on the display screen and appear in **My Computer** as a Portable Media Player.



**NOTE:** For Mac OS, the player must be set to **Auto Detect** or **MSC** mode in the **USB Mode** settings. See [Section 9 – Settings](#) for more details.

## Auto Detect or MTP mode



## MSC mode



## Removing the player from your computer:

**WARNING:** Do not disconnect the player while it's transferring data. Disconnecting the player from the computer while data are being transferred may damage the player.

**Windows** – Simply disconnect the USB cable from the player after you have finished charging, transferring, firmware upgrading, or synchronizing files.

**Mac** – Eject the removable disk by dragging the icon to the Trash and then disconnect the USB cable.



## Updating the Firmware

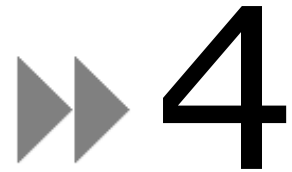
SanDisk occasionally releases firmware updates, which may include new features and performance enhancements. To ensure your Sansa Fuze™ media player has the latest firmware, please download and install the Sansa Firmware Updater at [http://kb.sandisk.com/app/answers/detail/a\\_id/278](http://kb.sandisk.com/app/answers/detail/a_id/278).

## Formatting the Player

**WARNING:** Formatting the player will delete all the content you have on the player.

1. From the main menu, select **Settings**.
2. Select **System Settings**.
3. Select **Format**.
4. Select **Yes** to start formatting.

You can also format your player from a PC using Windows Explorer or Windows Media Player.



*This chapter shows you how to transfer music files, photos, and videos from your computer to your Sansa<sup>®</sup> Fuze<sup>™</sup> player.*

# Loading Content

## Loading Music

You can transfer music from your computer to the player using the drag-and-drop method or using music management software such as Windows<sup>®</sup> Media Player. Files from Audible.com require Audible Manager to transfer to your player.

### Drag and Drop (Windows)

1. Connect your Sansa player to your PC.
2. Open Windows Explorer.
3. Double-click on your Sansa player.
4. Double-click **Internal Memory** if you are using WMP 11 or double-click **Media** if you are using WMP 10.
5. Drag and drop music files from your computer to the Sansa player's **MUSIC** folder.

You can also drag and drop files to a microSD<sup>™</sup> card inside your player by going to **My Computer > Sansa Fuze > External uSD Card**. You can only drag and drop files to the card if you have write permissions for the card.

### Drag and Drop (Mac)

1. Connect your Sansa player to your MAC computer.
2. Double-click on the removable disk named **SANSA FUZE** that appears on your desktop.
3. Double-click on the **Music** folder.
4. Drag and drop music files from your computer to the player's **Music** folder.

**NOTE:** Remember to eject the removable disk before disconnecting your player.

You can also drag and drop files to a microSD™ card inside your player by double-clicking the second removable disk that appears when you connect your player.

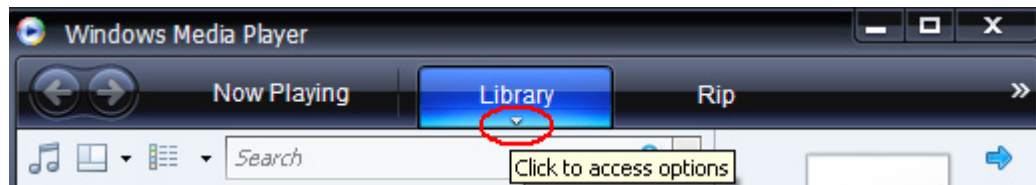
**NOTE:** The second removable disk will display with the card's name, just as if you connected it via a card reader. You can only drag and drop files to the card if you have write permissions for the card.

## Windows Media Player

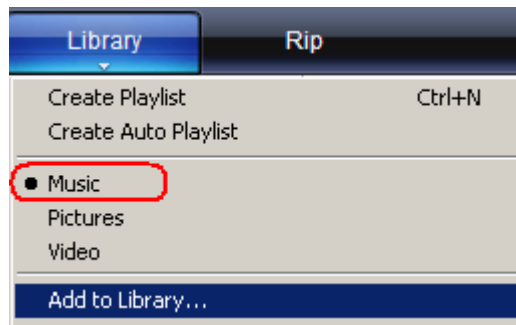
Before you can create a playlist and transfer (or synchronize) them to your Sansa player, you need to show Windows Media Player where your songs are located.

### Adding Music Files to Library...

1. Click the arrow below the **Library** tab.



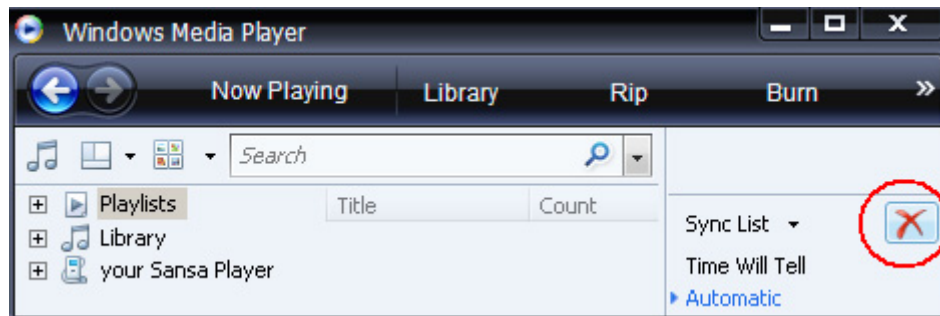
2. Make sure **Music** is selected then click **Add to Library**.



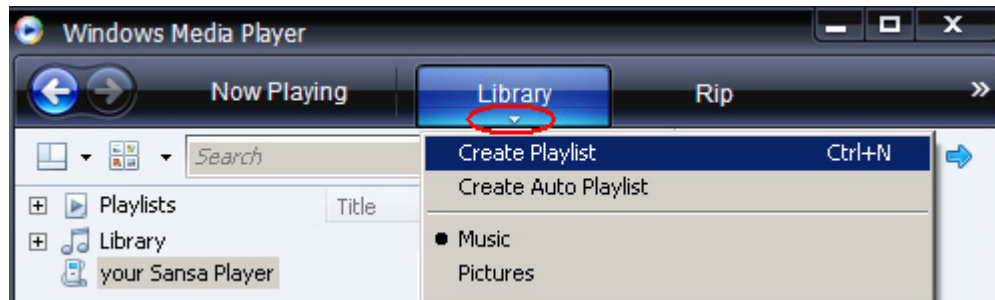
3. In **Add to Library** dialog box, click one of the following options then click **OK**.
  - **My personal folders:**  
Use this option to monitor the digital media files stored in your personal Music folder as well as any files stored in the public Music folders that everyone who uses your computer has access to.
  - **My folders and those of others that I can access:**  
Use this option to monitor the digital media files stored in your personal Music folder, the files stored in the public Music folders, as well as the files stored in the personal Music that belong to other users on your computer.

### Creating Playlists

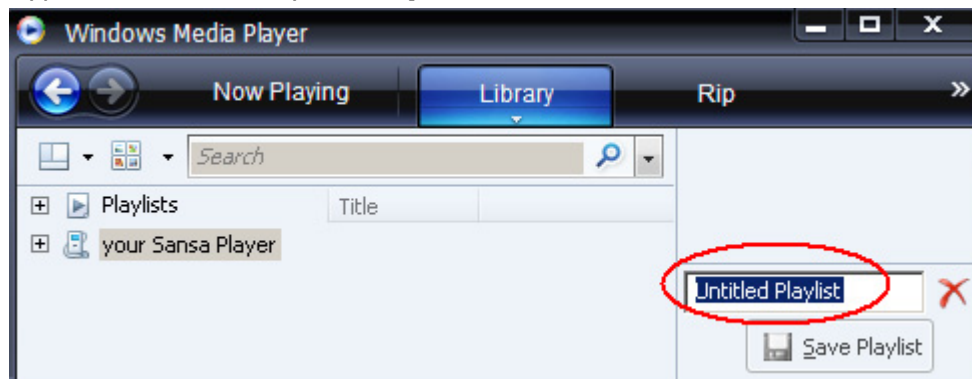
1. Launch Windows Media Player.
2. Clear the List pane by clicking the **Clear List pane button**.



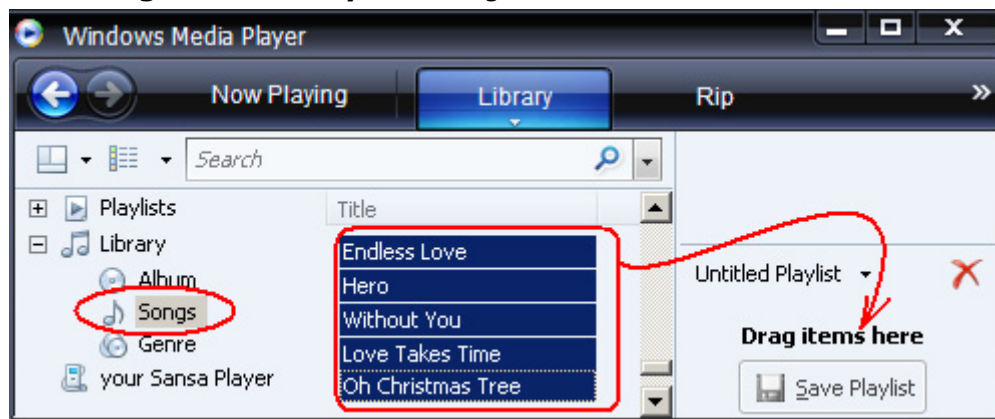
3. Click the arrow below the **Library Tab** then select **Create Playlist**.



4. Type in the name of your **Playlist**.

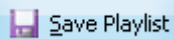


5. Click **Songs** from **Library** then drag them to the **List Pane**.



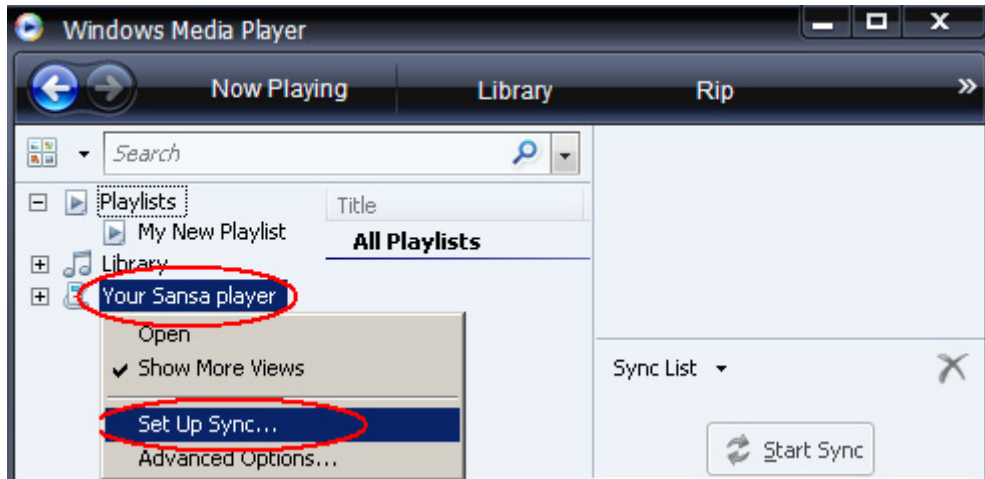
6. To rearrange the songs, drag them up or down in the **List pane**.

7. Click **Save Playlist**.

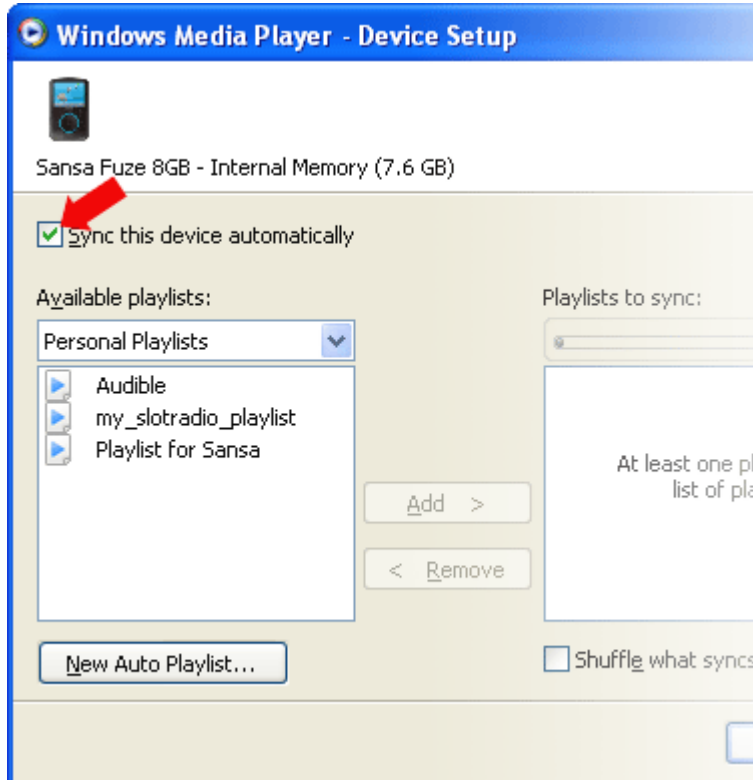


## Transferring Playlists

1. Connect your Sansa player to the computer.
2. Select **Sync digital media files to this devices using Windows Media Player** on initial connection.
3. Right-click on **Your Sansa Player**, then select **Set Up Sync**.

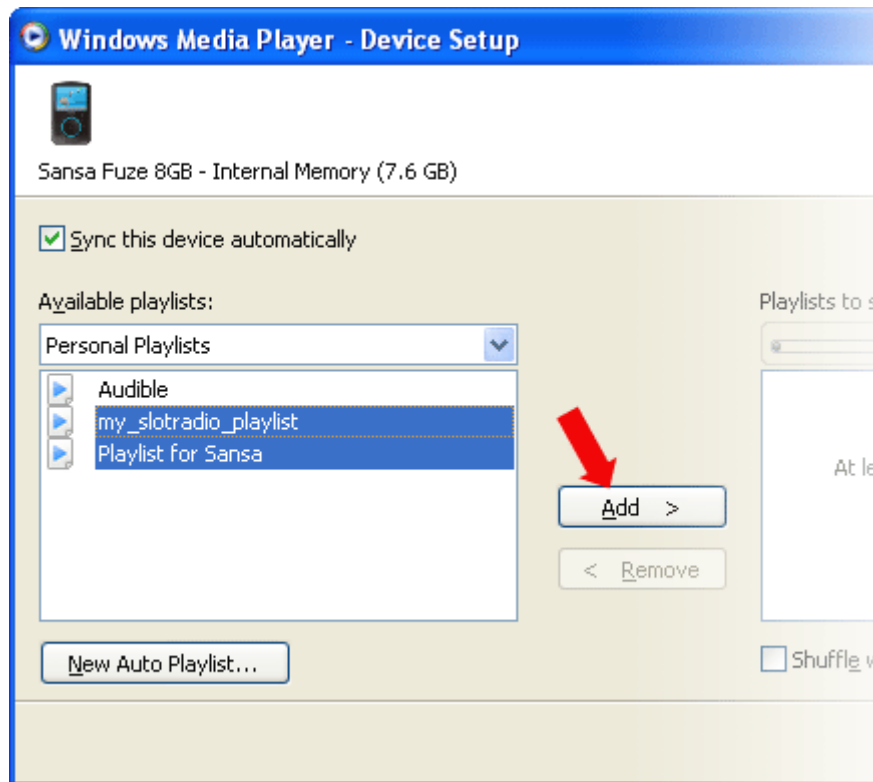


4. Click to select the **Sync this device automatically** check box.

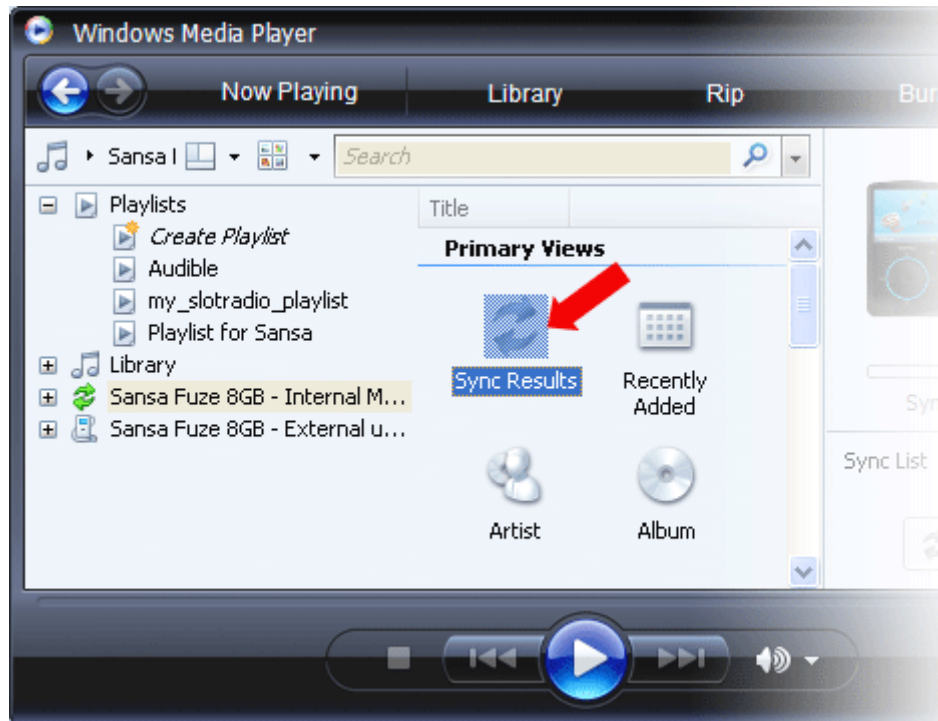


5. Select **Personal Playlists** from the drop down menu on the left pane.

6. Highlight the playlists you want to transfer to your player, click **Add**, then **Finish**.



7. Synchronization will start as soon as you click Finish. To see the Sync status, click on the Sansa Fuze media player, and then click on **Sync Results**.



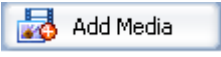
# Loading Photos and Videos

The Sansa Media Converter software lets you convert photos and videos as appropriate, and then transfer them to your Sansa player. Sansa Media Converter offers features such as cropping, rotating, and resizing photos before transferring them to your player as well as the ability to transfer photo and video files to your microSD™ card. Refer to the Sansa Media Converter software to view what file formats are supported.

The Sansa Media Converter application is available via the Sansa Firmware Updater. Please visit our Knowledgebase ([http://kb.sandisk.com/app/answers/detail/a\\_id/4431](http://kb.sandisk.com/app/answers/detail/a_id/4431)) to download the latest version of Sansa Firmware Updater.

**NOTE:** Do not select *both* videos and photos to convert/transfer at the same time. Select one media type (photos or video) and complete the conversion/transfer process before selecting the second media type to convert/transfer.

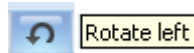
1. Connect the Sansa player to the computer.
2. Select **Sansa Media Converter using Sansa Media Converter** on initial connection.

3. Click **Add Media**  to select video or photo files to be converted.

4. To edit a picture, select it and follow these steps:

a. To rotate:

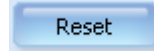
i. To rotate left, click **Rotate Left.**



ii. To rotate photo to right, click **Rotate Right.**



5. To view to original photo setting, click **Reset.**



6. Click **Apply**  after you have completed editing.

7. The converted files are stored in **My Album** by default. To place them in a different folder, follow these steps:

a. Highlight **My Album**, **Album Name:**  then type in the new Name.

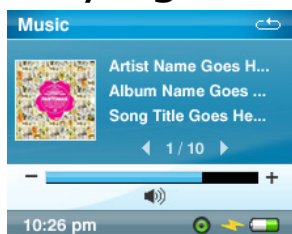
b. Click on **Sansa player** or the **microSD card** from the information pane to select a Save location.

8. Click  to start.

*This chapter shows you how to play music and audiobooks, watch videos, and view photos on your Sansa® Fuze™ media player.*

# Playing Content

## Playing Music

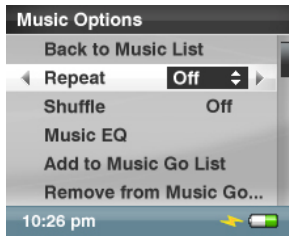


Sansa Fuze Media Player supports MP3, WMA, secure WMA, FLAC, OGG-Vorbis, Audible (AA), audiobooks and podcasts in WMA and MP3 file formats.

1. Press the **Home** button to return to the Main Menu.
2. Select **Music** from the Main Menu.
3. Select **Play All**, **Recently Added**, **Artists**, **Albums**, **Songs**, **Genres**, **My Top Rated**, **Playlists**, **Podcasts**, **Audiobooks**, or **Recordings** (Voice), or **Folders**.
4. Highlight and select the desired track to play.
5. Press the **>>|** button to skip to next song or press-and-hold to fast forward.
6. Press the **|<<** button once to return to the beginning of the current song; Press the **|<<** button twice to go back to previous song; or press-and-hold to rewind.
7. Use the thumbwheel to adjust the volume level during playback.
8. Press the **Select** button to view current song's artwork, Equalizer bands, rating, or the next song.
9. The following options are available during music playback by pressing the **Submenu** button (but not during slotRadio™ card playback, which permits skipping but not repeating of songs).



# Music Options



## Add Song to Go List

1. Select **Add Song to Go List**.

## Remove Song from Go List

The **Remove Song from Go List** option only appears if the current song is already added to the GoList.

1. Select **Remove Song from Go List**.

## Rate Song

1. Select **Rate Song**.
2. Use thumbwheel to select the rating.
3. Press the **Select** button.

## Repeat Mode

1. Select **Repeat**.
2. Use thumbwheel to choose a repeat mode:
  - Off: No repeat of tracks
  - Song: Repeat the current track
  - All: Repeat all selected tracks
3. Press **Select** to change to Repeat Mode.

## Shuffle Mode

1. Select **Shuffle**.
2. Use thumbwheel to choose Shuffle on or Shuffle off (to play songs in random order, set Shuffle to ON).
3. Press **Select** to change the Shuffle mode.

## MusicEQ

1. Select **Music EQ**.
2. Use thumbwheel to choose an equalizer mode.
3. Press **Select** to change.

## Replay Gain

Replay Gain is a method of maintaining a constant perceived volume level during playback. For more information on Replay Gain, please visit our Knowledgebase (<http://kb.sandisk.com>).

1. Select **Replay Gain**.
2. Select **Mode**.
3. Use the thumbwheel to apply Replay Gain on Song, Album, or disable Replay Gain.
4. Press the **Select** button.
5. Select **Pre-Gain**.
6. Use the thumbwheel to choose pre-gain level.
7. Press the **Select** button.

#### Delete Song

1. Select **Delete Song**.
2. Select **Yes** to confirm.

#### Track Info

1. Select **Track Info**.
2. Press the **Up** or **Down** button to scroll through the track information.

## Playing music from a preloaded microSD™ Card

### microSD™ card with content

1. Insert a microSD card with content into the microSD card slot. The player will display the message: "Refreshing your media."
2. Select **Music**.
3. Select **Artists, Albums, Songs, Genres** or **Recently Added** to navigate to the music you wish to listen to.
4. Alternately, from the **Music** menu, select **Folders > External uSD Card**, and select either **Play All** or continue navigating through the folders to the file name of the song you want.

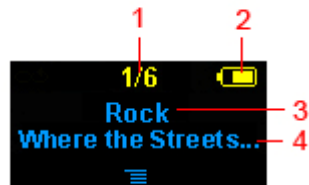
Individual songs will display with a card icon to indicate they are stored on the external microSD™ card. Artists and Albums will not display an icon.

## slotMusic™ card

1. Insert a slotMusic™ card into the microSD™ card slot. The player will display the message: "Refreshing your media."
2. From the main menu, select **Music**.
3. Select **Folder**.
4. Select **External uSD Card**, and select **Play All**.

## slotRadio™ card

slotRadio™ cards contain hundreds of songs arranged into playlists called Channels. Your Sansa® Fuze media player can play slotRadio cards, but playback behavior will differ from your standard media per the instructions below. You can also go to [www.slotradio.com](http://www.slotradio.com) to learn more about slotRadio cards and available titles.



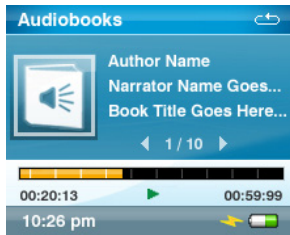
1 Current/Total Channels	Display the current channel number and the total number of channels
2 Battery Indicator	Display the battery status
3 Channel Name	Display the channel name
4 Artist Name - Title	Display the song's artist name and title

1. Insert a slotRadio™ card into the microSD™ card slot. The player will display the message: "Refreshing your media."
2. From the Main Menu, select **slotRadio**.
3. Press the **Select** button to begin playing.
4. Press the **Submenu** button to skip to the next channel.
5. Press the **>>|** button to skip to the next song within a channel.
6. Press **>||** to pause or resume playback.

Pressing select toggles the screen view from now playing to a graphic equalizer to the next song preview.

**NOTE:** In slotRadio™ mode, the **|<<** button will not function. You cannot restart a song or go to the previous song. All songs eventually repeat randomly on their own.

# Playing Audiobooks



1. From the main menu, select **Music**.
2. Select **Audiobooks**.
3. Select an audiobook.
4. Press the **>>|** button to skip to the next chapter (if Ch. Mode is enabled) or press-and-hold the **>>|** button to fast forward.
3. Press the **|<<<** button to go back to the previous chapter or press-and-hold the **|<<<** button to rewind.
4. Use the thumbwheel to adjust the volume level.
5. The following options are available during audiobook playback by pressing the **Submenu** button (but not during slotRadio™ card playback, which permits skipping but not repeating of songs).

## Audiobooks Options

### Enabling Chapter Browsing

1. Select **Ch. Mode**.
2. Use the **thumbwheel** to select On (enable) or Off (disable).
3. Press the **Select** button to change the mode.

### Setting the Speed

1. Select **Speed**.
2. Use the **thumbwheel** to select speed: Normal, Slow or Fast.
3. Press the **Select** button to change the speed.

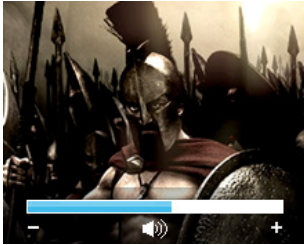
### Deleting Audiobooks

1. Select **Delete Book**.
2. Select **Yes** to confirm.

### Track Info

3. Select **Track Info**.
4. Press the **Up** or **Down** button to scroll through the track information.

# Watching Videos



1. From the main menu, select **Video**.
2. Use the **thumbwheel** to highlight and select **Videos A-Z** to display the videos alphabetically.
3. Highlight the desired video and press the **Center** button to play.
  - Press the **>||** button to pause or resume video playback.
  - Press the **>>|** or **|<<** button to skip forward or backward within the video.
  - Press and hold the **>>|** or **|<<** button to scan forward or backward within the video.
  - Move the **thumbwheel** to adjust volume level.

## Video Options

To adjust the **Video Options**, press the **Submenu** button during video playback.

### Add Bookmark to a Video

1. Select **Add to Bookmark**.

### Rate a Video

1. Select **Rate Video**.
2. Use thumbwheel to rate the video
3. Press the **Select** button to accept the rating.

### Playing Video from a Bookmark

1. Select **Video Bookmarks**.
2. Use thumbwheel to highlight the desired bookmark and press the **Select** button to play.

### Adjusting Video Brightness

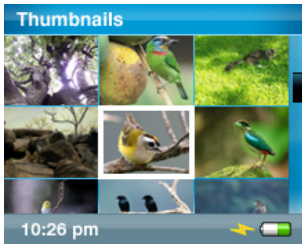
1. Select **Video Brightness**.
2. Move the thumbwheel clockwise or counterclockwise to increase or decrease the brightness level.
3. Press the **Select** button to accept.

### Deleting Video

1. Select **Delete Video**.
2. Select **Yes** to confirm.

# Viewing Photos and Slideshows

The photo browser displays photos from the **Menu Options**, as well as slideshows (with music) converted and transferred to your player using the Sansa Media Converter. You can shuffle slideshow photos, repeat a slideshow, and specify the slide duration.

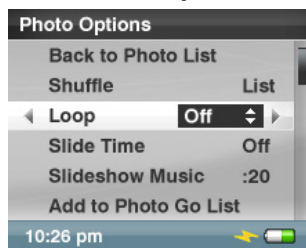


1. From the main menu, select **Photos**.
2. Select **Photos A – Z**.
3. Use the **thumbwheel** to highlight and select the photo or album you want to view.
4. Press the **>>|** or **|<<** button to view the next or previous photo.

To view a slideshow of all photos, follow these steps:

1. From the main menu, select **Photos A-Z**.
2. Use the **thumbwheel** to highlight and select the photo you want to view
3. Press the **Play** button to start the slideshow.
4. Press the **>||** button to pause or resume.
5. Press-and-hold the **Select** button to add current photo to the Photo Go List.
6. Use the **thumbwheel** to adjust the volume if music is added to the slideshow.
7. The following options are available during slideshow by pressing the **Submenu** button.

## Photo Options



### Shuffling Photos

1. Select **Shuffle**.
2. Use the thumbwheel to select Shuffle On or Off.
3. Press the **Select** button.

### Looping a Slideshow

1. Select **Loop**.
2. Use the thumbwheel to select Loop On or Off.
3. Press the **Select** button.

## Specifying the Slide Duration

1. Select **Slide Time**.
2. Use the thumbwheel to highlight and select the desired duration (from 2 seconds to 30 seconds).
3. Press the **Center** button.

## Selecting Slideshow Music

1. Select **Slideshow Music**.
2. Select **Current Song** (if a song is currently playing) or **Music Go List** (plays music from the Go List) then press the **Center** button.

## Adding to the Photo Go List

1. Select **Add to Photo Go List**.

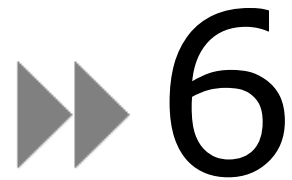
## Removing from the Photo Go List

The **Remove from Photo Go List** option only appears if the current photo has been added.

1. Select **Remove from Photo Go List**.

## Deleting Photo

1. Select **Delete Photo**.
2. Select **Yes** to confirm.



*This chapter provides you instructions on how to listen to FM broadcast radio and to program the preset stations on your Sansa® Fuze™ media player.*

## FM Radio (if applicable)

The Sansa player includes an integrated FM radio for listening to live broadcast FM stations. Please note that the FM Radio function may not be available in your region.

### Listening to FM Radio

1. From the main menu, select **FM Radio**.
2. A radio frequency menu will appear. Press the |<< or >>| button to adjust and search for the desired frequency.
3. For fast search, press and hold the |<< or >>| button.
4. Use the **thumbwheel** to adjust the volume level.

### Programming FM Presets

You can program up 30 preset stations.

1. From the main menu, select **FM Radio**.
2. Press the |<< or >>| button to search for the desired frequency.
3. Press **Submenu** button while listening.
4. Select **Add Preset** to save the current frequency into presets. The Add Preset option appears only if the preset has not been added.



## Radio Options



Press the **Submenu** button while listening to radio to enter the Radio Options.

- Select **Add Preset** to save the current frequency into presets. The Add Preset option appears only if the preset has not been added.
- Select **Auto Presets** to allow the Sansa player to automatically scan and store presets.
- Select **View All Presets** to view the saved presets.
- Select **Delete Preset** to remove current frequency from preset. The Delete Preset option only appears if the preset has been added.
- Select **Recording** to bring up the recording screen:
  - Select **Record Now** to record the currently tuned station.
  - Select **Play Recording** to go to the play list and select a recording to listen.
  - Select **Delete a Recording** to delete a recording from the recordings play list.

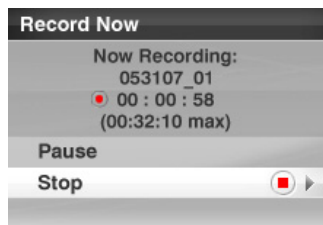
You can also set the FM region and FM Mode by following these steps:

1. Press the **Home** button to return to the Main Menu.
2. Select **Settings**.
3. Select **Radio Options**.
4. To change the FM region:
  - a. Select **FM Region**.
  - b. Use the **thumbwheel** to set your desired region: **USA** or **World**.
5. To change the FM mode:
  - a. Select **FM Mode**.
  - b. Use the **thumbwheel** to set your desired mode: **Mono** or **Stereo**.

*This chapter shows you how to use your Sansa® Fuze™ media player's built-in microphone to do voice recordings.*

# Recording

## Voice Recording

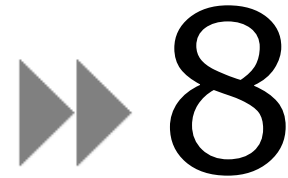


The Sansa Fuze media player has a built-in microphone allowing you to record your own voice, an interview, or other speech.

1. From the main menu, select **Voice**.
2. Select **Record Now**.
3. To pause the recording, select **Pause**.
4. To stop the recording, select **Stop**.
5. Select **Yes** to save the recording.

### **NOTE: For Home and Personal Use**

This product is intended to be used for recording and playback for your home and personal enjoyment. Copying and commercial use of copyrighted material without permission of the copyright owner may be prohibited by law. Use of your media player, in compliance with all copyright and applicable intellectual property laws, remains the responsibility of the user of the product.



*This chapter shows you how to delete music, photos, video, and recordings on Sansa® Fuze™ media player.*

## Deleting Content

There are two ways to delete content from your Sansa player. You can delete it from the player directly or using a computer.

To delete files directly from the Sansa player, follow these steps:

1. In playback mode, press the **Submenu** button.
2. Select **Delete**.

To delete music files using the computer, follow these steps:

1. Connect your Sansa to the computer.
2. Select **Open device to view files using Windows Explorer** on initial connection.
3. Locate the folder where your files are stored.

**NOTE:** Music files are stored in the MUSIC folder. Voice recording files are stored in RECORDING folders. Photos and Videos are stored at PHOTO and VIDEOS folders, respectively.

4. Highlight and delete the desired files.

*This chapter shows you how to customize your Sansa<sup>®</sup> Fuze<sup>™</sup> media player's settings.*

# Settings

You can personalize your player's by selecting **System Settings**.

1. From the main menu, select **Settings**.
2. Select **System Settings**.

## Wallpaper Settings

The wallpaper settings allow you to change the background color.

1. Select **Color**.
2. Use thumbwheel to highlight the color you like then press the **Select** button.

## Display Art in Lists

Enabling this feature displays a small image of the song album cover, audiobook cover, and photos when scrolling through list of these items.

1. Select **Display Art in Lists**.
2. Use thumbwheel to switch between On (enable) and Off (disable).
3. Press the **Select** button.

## Backlight

After idling for predefined seconds, the player will trigger the timer automatically and cease the backlight. You can press any button to wake the backlight up. The longer your backlight time, the more battery power you use.

1. Select **Backlight**.
2. Use **thumbwheel** to select backlight timer (from 5 seconds to 1 Hour).
3. Press the **Select** button.

## Power Saver

You can set the timer under Power Saver to automatically turn off the player when the music is paused or when there is no activity.

1. Select **Power Saver**.
2. Use thumbwheel to select desired timer (from off to 120 minutes).
3. Press the **Select** button.

## Sleep

You can set the timer under Sleep to automatically put the player in idle mode when the music is paused or when there is no activity.

1. Select **Sleep**.
2. Use thumbwheel to select desired timer (from off to 120 minutes).
3. Press the **Select** button.

## Language

1. Select **Language**.
2. Use thumbwheel to highlight the desired language
3. Press the **Select** button.

## Date & Time

1. Select **Date & Time**.
2. Use thumbwheel to highlight the desired setting – **Month, Date, Year, Hour, Minute, or Time** then press the **Select** button.
3. Use thumbwheel to adjust the selected setting then press the **Select** button.
4. Repeat steps 2 and 3 for each setting you want to adjust.

## Brightness

1. Select **Brightness**.
2. Use thumbwheel to adjust the Brightness level.
3. Press the **Select** button to accept the changes.

## Volume

1. Select **Volume**.
2. Use thumbwheel to select **Normal** or **High**.

## Reset Factory Settings

This will restore the player to its original factory settings.

1. Select **Reset Factory Settings**.
2. Use thumbwheel to highlight **Yes** then press the **Select** button.

## Info

This displays information regarding your Sansa Fuze Media Player (such as firmware version, available/free memory, number of contents loaded in the player, and the battery status)

## USB Mode

USB Mode determines how your player communicates with your computer. Auto Detect is selected by default. You can also choose to always connect in MTP (Media Transfer Protocol) or MSC (Mass Storage Class) modes. Windows can use MTP or MSC mode, but Mac OS will only work with MSC mode. If you set the USB Mode to Auto Detect, make sure you are running Windows Media Player version 10 or higher.

1. Select **USB Mode**.
2. Use thumbwheel to select **Auto Detect, MTP, or MSC**.

## Format

**WARNING:** Formatting will DELETE all the content on your player.

1. Scroll down to **Format** and select it.
2. Select **Yes** to format or **Cancel** to exit.

## Press and Hold

Determine whether pressing and holding the select button during playback will add a song to the GoList or allow you to rate the song. (Note that neither choice will function during playback of a slotRadio™ card.)

1. Select **Press and Hold**.
2. Use thumbwheel to select **Add Songs to Go List, or Rate Song**.

# ▶▶ 10

*This chapter helps you get the most from your Sansa® Fuze™ media player with tips and troubleshooting.*

## Tips & Troubleshooting

**Why isn't my Sansa® Fuze media player being charged or detected by my computer when I connect it?**

Verify that you are using Windows Media Player version 10 or higher, reset your player, and try again.

**How do I drag music files to my Sansa Fuze media player?**

As long as the files are WMA or MP3, they can be dragged into the Music folder.

**Which bit rates will the Sansa Fuze media player support?**

The Sansa Fuze™ media player will support 32-320Kbps for MP3 and 32-256Kbps for WMA.

**How do I format my Sansa Fuze media player?**

You can use the device Format command under Settings→Format or using a computer.

**Why should I update the firmware?**

You should always update the player to the latest firmware to ensure that it functions correctly and has all the latest features. Please download the Sansa Updater Application from the Sansa Support Website.

**How do I transfer videos and photos to my Sansa Fuze media player?**

You need to install the Sansa Media Converter software (available via Sansa Firmware Updater [http://kb.sandisk.com/app/answers/detail/a\\_id/4431](http://kb.sandisk.com/app/answers/detail/a_id/4431)). This software will convert your video and photo files then transfer them to the player. Refer to the Sansa Media Converter software for details on file formats supported.

## What music file formats does the Sansa Fuze support?

The Sansa Fuze media player supports MP3, WAV, WMA, secure WMA, FLAC, Ogg-Vorbis, and Audible formats.

## Some of my music files are on my player, but cannot be played. When I select them, another song begins to play. What is wrong?

You may not have purchased the rights to play the song on an additional device. To test this, try to play a song that you have copied from an older CD and converted to MP3 format. If you can play the test song, but not the original song that wouldn't play, then you need to purchase the rights to play the song.

## Is the player compatible with podcasts?

As long as the podcasts are in WMA or MP3 format and an appropriate bit rate (32-320 kbps), then the player should be capable of playing the files. Any MP3 files with podcast as a genre in the ID3 tag will appear under PodCasts. Any MP3 files stored in the Podcasts folder will appear under Podcasts submenu regardless of the genre setting.

## Why does my player say unknown artist/album?

Normally this is because the ID3 tags or WMA metadata information are missing. On the computer, right-click the song, choose Properties, Summary tab then Advanced. Then you can input the data such as Artist, Album, Song Title, Track Number, Genre, and Year.

## Can the Sansa Fuze Media player read high capacity microSD cards?

Yes, the Sansa Fuze™ media player can read and write to both microSD and microSDHC cards.

## How do I power reset my Sansa Fuze media player?

To reset your Sansa Fuze™ media player, slide the power button up and hold it for approximately 15 seconds.

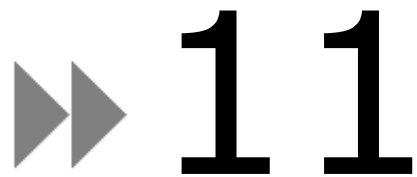
## Why won't my Sansa® Fuze media player play music?

Check to verify if the audio file type is supported. If the file type is supported, make sure that the file is not corrupted and that its license is up to date.

## How do I bookmark an audiobook?

The Sansa Fuze media player does not have bookmarking for audiobook files. For Audible audiobooks, use the chapter mode to skip and change chapters of the book. The resume feature allows users to pause and resume where they left off. In addition, users can turn off the player while playing the audiobook file and it will resume to the part where they left off.





*This chapter provides information to help you get service and support for your Sansa® Fuze™ media player.*

# Learn More, Service, and Warranty Information

## Getting Technical Support

Before you contact Technical Support, we encourage you to read the [Tips & Troubleshooting](#) section to see if your question is covered there.

If you have questions about the use or features of your Sansa player as well as other SanDisk products, please visit our Knowledgebase at <http://kb.sandisk.com>.

You can also call the SanDisk Technical Support Center. For **US**: 1-866-SanDisk (1-866-726-3475), **Worldwide**: see [www.sandisk.com/support](http://www.sandisk.com/support) for local country phone numbers. When you call us for support, please include as much information as you can from your packaging material. This will allow us to help you more quickly.

## SanDisk Limited Warranty

SanDisk warrants that this product will be free from material defects in design and manufacture and will substantially conform to the published specifications under normal use and subject to the conditions below. This warranty is provided to the original end user purchasing from SanDisk or an authorized reseller, and is not transferable. Proof of purchase may be required. SanDisk is not responsible for any failure or defect caused by any third party product or component, whether authorized or not. This warranty does not apply to any third party software provided with the product and you are responsible for all service and repair needed for such software. This warranty is void if the product is not used in accordance with the product instructions, or if it is damaged as a result of improper installation, misuse, unauthorized repair, modification or accident.

To obtain warranty service contact SanDisk at 1-866-SanDisk or send an email to: [support@SanDisk.com](mailto:support@SanDisk.com). You must return the product in tamper resistant packaging, freight prepaid, as instructed by SanDisk. You must obtain a tracking confirmation number, which you may be required to provide to SanDisk. SanDisk will, at its option, repair or replace the product with new or refurbished product of equal or greater capacity and functionality, or refund the purchase price. The warranty duration on replaced product will be that time period remaining on the original product. THIS CONSTITUTES SANDISK'S ENTIRE LIABILITY AND YOUR EXCLUSIVE REMEDY FOR BREACH OF THIS WARRANTY.

SanDisk does not warrant, and shall not be responsible for, any lost data or information contained in any product (including in any returned product), regardless of the cause of the loss. SanDisk's products are not warranted to operate without failure. SanDisk products should not be used in life support systems or other applications where failure could threaten injury or life. This warranty gives you specific legal rights, and you may also have other rights which vary by jurisdiction.

THE FOREGOING IS SANDISK'S SOLE WARRANTY. SANDISK DISCLAIMS ALL OTHER EXPRESS AND IMPLIED WARRANTIES TO THE FULLEST EXTENT PERMITTED BY APPLICABLE LAW. THE IMPLIED WARRANTIES OF MERCHANTABILITY AND FITNESS FOR A PARTICULAR PURPOSE ARE LIMITED TO THE DURATION OF THE EXPRESS WARRANTY. SOME JURISDICTIONS DO NOT ALLOW LIMITATION ON HOW LONG AN IMPLIED WARRANTY LASTS, SO THE ABOVE LIMITATION MAY NOT APPLY TO YOU. IN NO EVENT SHALL SANDISK OR ANY AFFILIATED OR SUBSIDIARY COMPANY BE LIABLE UNDER ANY CIRCUMSTANCES FOR ANY DIRECT, INDIRECT, OR CONSEQUENTIAL DAMAGES, ANY FINANCIAL LOSS OR ANY LOST DATA OR IMAGE, EVEN IF SANDISK HAS BEEN ADVISED OF THE POSSIBILITY OF SUCH DAMAGE. SOME JURISDICTIONS DO NOT ALLOW THE EXCLUSION OR LIMITATION OF INCIDENTAL OR CONSEQUENTIAL DAMAGES, SO THE ABOVE LIMITATION OR EXCLUSION MAY NOT APPLY TO YOU. IN NO EVENT WILL SANDISK'S LIABILITY EXCEED THE AMOUNT PAID BY YOU FOR THE PRODUCT.

## SANDISK CORPORATION

### End User License Agreement

DO NOT DOWNLOAD, INSTALL OR USE THE SOFTWARE UNTIL YOU HAVE CAREFULLY READ THE TERMS OF THIS END USER LICENSE AGREEMENT ("AGREEMENT"). BY DOWNLOADING, USING OR INSTALLING THE SOFTWARE, YOU AGREE TO ALL OF THE TERMS OF THIS AGREEMENT. IF YOU DO NOT AGREE TO ALL OF THE TERMS, DO NOT DOWNLOAD, INSTALL OR USE THE SOFTWARE AND, IF APPLICABLE, PROMPTLY RETURN IT TO YOUR PLACE OF PURCHASE FOR A REFUND. IF THE SOFTWARE WAS INCLUDED WITH YOUR PURCHASE OF HARDWARE, YOU MUST RETURN THE ENTIRE HARDWARE/SOFTWARE PACKAGE IN ORDER TO OBTAIN A REFUND. IF THE SOFTWARE WAS ACCESSED ELECTRONICALLY, CLICK "NOT ACCEPT" TO STOP THE DOWNLOAD PROCESS.

The firmware, computer programs, device drivers, data or information ("Software") is provided to each person who downloads, uses or installs the Software ("you" or "your") under the terms of this Agreement between you and SanDisk Corporation ("SanDisk," "we," or "us"), and may be subject to additional terms and conditions in an agreement between you and SanDisk's third party licensors ("Licensors"). The Software is owned by SanDisk or its Licensors. The Software is protected by copyright laws and international copyright treaties, as well as other intellectual property laws and treaties.

1. Software License. Subject to the terms and conditions contained herein, SanDisk grants to you a limited, non-exclusive, non-sublicensable, transferable in accordance with these terms, royalty-free license under SanDisk's intellectual property rights to use the Software in executable form solely for your personal use only with a SanDisk product and only on a single computer or other hardware device at any given time (the "License"). The Software is "in use" when it is either downloaded, copied, loaded into RAM or installed into the hard disk or other permanent memory of a computer or other hardware device.

2. Restrictions. SanDisk and its Licensors retain all rights in the Software not expressly granted to you. You may not modify, adapt, translate or create derivative works (new versions) of the Software. No source code is provided under this Agreement. You may not reverse engineer, disassemble, decompile, rent, lease, or encumber the Software, or re-create or discover the source code of the Software. You may not embed or combine the Software within any other software product or device. The Software contains proprietary and confidential information of SanDisk and its Licensors, which you agree not to discover or reveal to others. Any and all permitted copies of the Software that you make or distribute must be unmodified, must contain all of the original Software's proprietary notices, and must include or be accompanied by this Agreement. You may not separate the Software into component parts for sublicense, distribution or transfer to a third party.

3. DISCLAIMER OF WARRANTIES. TO THE MAXIMUM EXTENT PERMITTED BY APPLICABLE LAW, THE SOFTWARE IS PROVIDED "AS IS" AND "AS AVAILABLE" WITH NO WARRANTIES AND NEITHER SANDISK NOR ITS LICENSORS MAKE ANY REPRESENTATION OR WARRANTY, STATUTORY OR OTHERWISE, IN LAW OR FROM THE COURSE OF DEALING OR USAGE OF TRADE, EXPRESS OR IMPLIED, INCLUDING WITHOUT LIMITATION, ANY WARRANTIES OF MERCHANTABILITY, FITNESS FOR A PARTICULAR PURPOSE, NON-INTERFERENCE, OR NON-INFRINGEMENT OF ANY THIRD PARTY INTELLECTUAL PROPERTY RIGHTS, OR EQUIVALENTS UNDER THE LAWS OF ANY JURISDICTION. YOU ASSUME THE ENTIRE RISK AS TO THE QUALITY AND PERFORMANCE OF THE SOFTWARE. SHOULD THE SOFTWARE PROVE DEFECTIVE, YOU, AND NOT SANDISK, ITS LICENSORS OR RESELLERS, ASSUME THE ENTIRE COST OF NECESSARY SERVICING, REPAIR, OR CORRECTION.

4. LIMITATION OF LIABILITY. TO THE EXTENT NOT PROHIBITED BY LAW, IN NO EVENT WILL SANDISK OR ITS LICENSORS, OR THEIR RESPECTIVE DIRECTORS, OFFICERS, EMPLOYEES, CONSULTANTS, LICENSORS, LICENSEES OR AFFILIATES, BE LIABLE FOR ANY INDIRECT, INCIDENTAL, SPECIAL, CONSEQUENTIAL, OR EXEMPLARY DAMAGES, ARISING OUT OF OR IN CONNECTION WITH THE DOWNLOAD, DISTRIBUTION, USE OR PERFORMANCE OR NON-PERFORMANCE OF THE SOFTWARE, EVEN IF SANDISK HAS BEEN ADVISED OF THE POSSIBILITY OF SUCH DAMAGES. THE FOREGOING LIMITATIONS OF LIABILITY SHALL APPLY NOTWITHSTANDING ANY FAILURE OF ANY REMEDY PROVIDED FOR HEREUNDER IN ITS ESSENTIAL PURPOSE. IN NO EVENT WILL SANDISK'S OR ITS LICENSORS' TOTAL LIABILITY TO YOU EXCEED THE AMOUNT YOU PAID TO US FOR THE USE OF THE SOFTWARE.

5. The Software is provided with "RESTRICTED RIGHTS." Use, duplication or disclosure by the Government is subject to restrictions as set forth in FAR 52.227-14 and DFARS 252.227-7013 et seq. Use of the Software by the Government constitutes acknowledgement of SanDisk's proprietary rights therein. Contractor or Manufacturer is SanDisk Corporation, 601 McCarthy Blvd, Milpitas, CA 95035.

6. Transfer. If you sell or otherwise transfer the SanDisk product that incorporates the Software as a whole, you may transfer the Software as fully integrated into such product provided that you also supply this Agreement to the purchaser or recipient of the product, at which time all of your rights under this Agreement will immediately cease. Except as

stated above, you may not assign or transfer this Agreement in part or in whole, and any attempt to do so shall be void.

7. Termination. We may terminate this Agreement and the license immediately and without notice if you breach it. Upon termination of this Agreement, you must delete or destroy all copies of the Software.

8. High Risk Activities. The Software is not fault-tolerant and is not designed or intended for use in hazardous environments requiring fail-safe performance, or any other application in which the failure of the Software could lead directly to death, personal injury, or severe physical or property damage (collectively, "High Risk Activities"). SANDISK AND ITS LICENSORS DISCLAIM ANY EXPRESS OR IMPLIED WARRANTY OF FITNESS FOR HIGH RISK ACTIVITIES AND SHALL NOT BE LIABLE FOR ANY LIABILITIES OR DAMAGES ARISING FROM SUCH USE.

General. This Agreement contains the entire understanding between the parties with respect to your use of the Software. If any part of this Agreement is found void and unenforceable, it will not affect the validity of the balance of this Agreement, which shall remain valid and enforceable according to its terms. This Agreement is governed by and construed under the laws of the State of California and controlling U.S. federal law without regard to conflicts of laws provisions thereof. The U.N. Convention on Contracts for the International Sale of Goods shall not apply to this Agreement. Any action or proceeding arising from or relating to this Agreement shall be adjudicated in the state or federal courts of Santa Clara County, California, and the parties hereby agree to the exclusive jurisdiction and venue of such courts. You will not remove or export from the United States or re-export from anywhere any part of the Software or any direct product thereof to any country in violation of U.S. Export Administration Regulations, or a successor thereto, except in compliance with and with all licenses and approvals required under applicable export laws and regulations including, without limitation, those of the U.S. Department of Commerce. Any waivers or amendments of this Agreement shall be effective only if made in writing and signed by an authorized representative of each party. You agree that the Licensors are third party beneficiaries of this Agreement to enforce your performance of the terms and conditions of this Agreement. The provisions of Sections 2, 3, 4, 5, 6, 7, 8 and 9 shall survive the termination or expiration of this Agreement.